



ELECTRONIC COPY

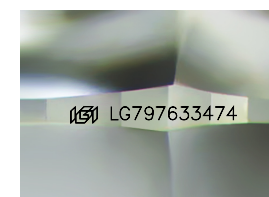
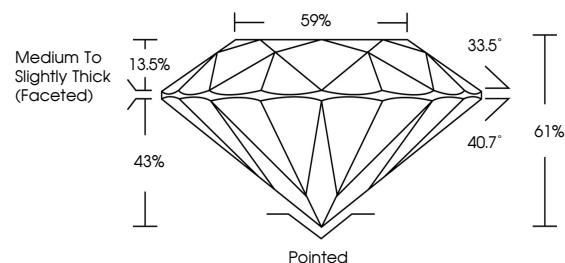
LG797633474 Report verification at igi.org



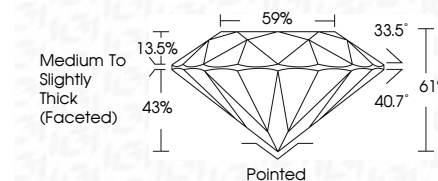
May 1, 2026 IGI Report Number LG797633474 Description LABORATORY GROWN DIAMOND Shape and Cutting Style ROUND BRILLIANT Measurements 6.60 - 6.63 X 4.03 MM GRADING RESULTS Carat Weight 1.09 CARAT Color Grade E Clarity Grade VS 1 Cut Grade EXCELLENT

May 1, 2026 IGI Report Number LG797633474 Description LABORATORY GROWN DIAMOND Shape and Cutting Style ROUND BRILLIANT Measurements 6.60 - 6.63 X 4.03 MM

PROPORTIONS



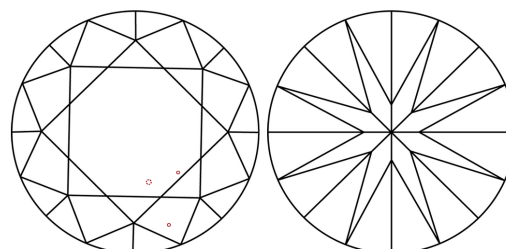
Sample Image Used



GRADING RESULTS

Carat Weight 1.09 CARAT Color Grade E Clarity Grade VS 1 Cut Grade EXCELLENT

CLARITY CHARACTERISTICS



KEY TO SYMBOLS

Red symbols indicate internal characteristics. Green symbols indicate external characteristics.

COLOR

D E F G H I J Faint Very Light Light

CLARITY

FL IF VS 1-2 VS 2-3 SI 1-2 I 1-3 Flawless Internally Flawless Very Very Slightly Included Very Slightly Included Slightly Included Included

ADDITIONAL GRADING INFORMATION

Polish EXCELLENT Symmetry EXCELLENT Fluorescence NONE Inscription(s) LG797633474 Comments: This Laboratory Grown Diamond was created by Chemical Vapor Deposition (CVD) growth process. Type IIa

ADDITIONAL GRADING INFORMATION

Polish EXCELLENT Symmetry EXCELLENT Fluorescence NONE Inscription(s) LG797633474

Comments: This Laboratory Grown Diamond was created by Chemical Vapor Deposition (CVD) growth process. Type IIa



May 1, 2026 IGI Report No LG797633474 ROUND BRILLIANT 6.60 - 6.63 X 4.03 MM 1.09 CARAT E VS 1 EXCELLENT 61% 61% Medium To Slightly Thick (Faceted) Pointed EXCELLENT EXCELLENT NONE NONE LG797633474 Comments: This Laboratory Grown Diamond was created by Chemical Vapor Deposition (CVD) growth process. Type IIa