



**ELECTRONIC COPY**

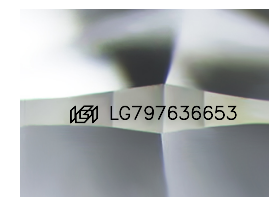
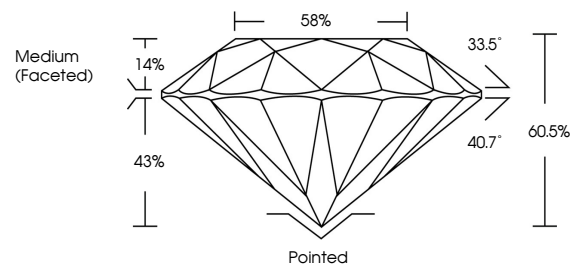
LG797636653  
Report verification at igi.org



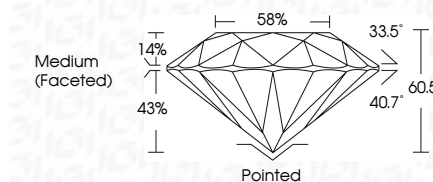
May 6, 2026  
IGI Report Number **LG797636653**  
Description **LABORATORY GROWN DIAMOND**  
Shape and Cutting Style **ROUND BRILLIANT**  
Measurements **6.45 - 6.50 X 3.91 MM**  
**GRADING RESULTS**  
Carat Weight **1.00 CARAT**  
Color Grade **D**  
Clarity Grade **VVS 2**  
Cut Grade **IDEAL**

May 6, 2026  
IGI Report Number **LG797636653**  
Description **LABORATORY GROWN DIAMOND**  
Shape and Cutting Style **ROUND BRILLIANT**  
Measurements **6.45 - 6.50 X 3.91 MM**  
**GRADING RESULTS**  
Carat Weight **1.00 CARAT**  
Color Grade **D**  
Clarity Grade **VVS 2**  
Cut Grade **IDEAL**

**PROPORTIONS**



Sample Image Used



**ADDITIONAL GRADING INFORMATION**

Polish **EXCELLENT**  
Symmetry **EXCELLENT**  
Fluorescence **NONE**  
Inscription(s) **IGI LG797636653**

Comments: This Laboratory Grown Diamond was created by Chemical Vapor Deposition (CVD) growth process. Type IIa

**ADDITIONAL GRADING INFORMATION**

Polish **EXCELLENT**  
Symmetry **EXCELLENT**  
Fluorescence **NONE**  
Inscription(s) **IGI LG797636653**  
Comments: This Laboratory Grown Diamond was created by Chemical Vapor Deposition (CVD) growth process. Type IIa

**COLOR**

D E F G H I J Faint Very Light Light

**CLARITY**

FL	IF	VS <sup>1-2</sup>	VS <sup>1-2</sup>	SI <sup>1-2</sup>	I <sup>1-3</sup>
Flawless	Internally Flawless	Very Very Slightly Included	Very Slightly Included	Slightly Included	Included



**IGI**



May 6, 2026  
IGI Report No LG797636653  
**ROUND BRILLIANT**  
6.45 - 6.50 X 3.91 MM  
1.00 CARAT  
D  
Color Grade **D**  
Clarity Grade **VVS 2**  
Depth **60.5%**  
Table **58%**  
Girdle **Medium (Faceted)**  
Culet **Pointed**  
Polish **EXCELLENT**  
Symmetry **EXCELLENT**  
Fluorescence **NONE**  
Inscriptions(s) **IGI LG797636653**  
Comments: This Laboratory Grown Diamond was created by Chemical Vapor Deposition (CVD) growth process. Type IIa