



ELECTRONIC COPY

LG797644507
Report verification at igi.org



May 8, 2026
IGI Report Number LG797644507
Description LABORATORY GROWN DIAMOND
Shape and Cutting Style CUSHION MODIFIED BRILLIANT
Measurements 10.01 X 7.08 X 4.79 MM
GRADING RESULTS
Carat Weight 3.02 CARATS
Color Grade FANCY VIVID BLUE
Clarity Grade VVS 2

LABORATORY GROWN DIAMOND REPORT

May 8, 2026
IGI Report Number LG797644507
Description LABORATORY GROWN DIAMOND
Shape and Cutting Style CUSHION MODIFIED BRILLIANT
Measurements 10.01 X 7.08 X 4.79 MM

GRADING RESULTS

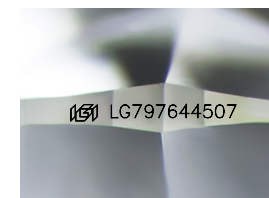
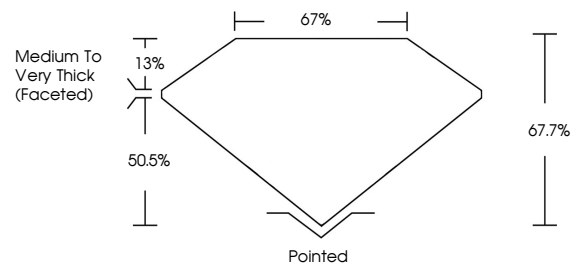
Carat Weight 3.02 CARATS
Color Grade FANCY VIVID BLUE
Clarity Grade VVS 2

ADDITIONAL GRADING INFORMATION

Polish EXCELLENT
Symmetry EXCELLENT
Fluorescence NONE
Inscription(s) (IGI) LG797644507

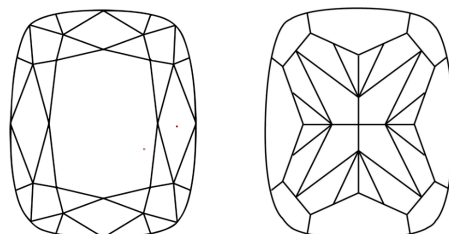
Comments: This Laboratory Grown Diamond was created by Chemical Vapor Deposition (CVD) growth process.
Indications of post-growth treatment.

PROPORTIONS



Sample Image Used

CLARITY CHARACTERISTICS



KEY TO SYMBOLS

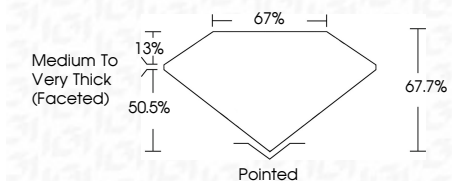
Red symbols indicate internal characteristics.
Green symbols indicate external characteristics.

COLOR

D E F G H I J Faint Very Light Light

CLARITY

FL IF VVS 1-2 VS 1-2 SI 1-2 I 1-3
Flawless Internally Flawless Very Very Slightly Included Very Slightly Included Slightly Included Included



ADDITIONAL GRADING INFORMATION

Polish EXCELLENT
Symmetry EXCELLENT
Fluorescence NONE
Inscription(s) (IGI) LG797644507
Comments: This Laboratory Grown Diamond was created by Chemical Vapor Deposition (CVD) growth process.
Indications of post-growth treatment.



IGI



May 8, 2026
IGI Report No LG797644507
CUSHION MODIFIED BRILLIANT
3.02 CARATS
Carat Weight 3.02 CARATS
Color Grade FANCY VIVID BLUE
Clarity Grade VVS 2
Depth 67.7%
Table 67%
Girdle Medium to Very Thick (Faceted)
Culet Pointed
Polish EXCELLENT
Symmetry EXCELLENT
Fluorescence NONE
Inscription(s) (IGI) LG797644507
Comments: This Laboratory Grown Diamond was created by Chemical Vapor Deposition (CVD) growth process.
Indications of post-growth treatment.