



ELECTRONIC COPY

LG797645550
Report verification at igi.org



May 6, 2026
IGI Report Number **LG797645550**
Description **LABORATORY GROWN DIAMOND**
Shape and Cutting Style **CUT CORNERED
RECTANGULAR MODIFIED
BRILLIANT**
Measurements **8.28 X 6.09 X 4.24 MM**
GRADING RESULTS
Carat Weight **2.04 CARATS**
Color Grade **FANCY LIGHT YELLOW**
Clarity Grade **VVS 2**

May 6, 2026
IGI Report Number **LG797645550**
Description **LABORATORY GROWN DIAMOND**
Shape and Cutting Style **CUT CORNERED RECTANGULAR
MODIFIED BRILLIANT**
Measurements **8.28 X 6.09 X 4.24 MM**

GRADING RESULTS

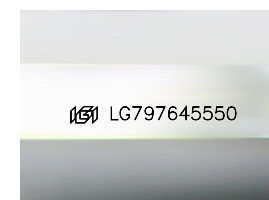
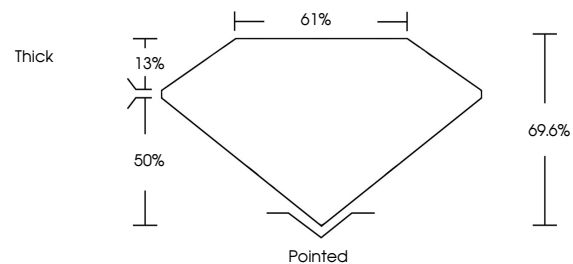
Carat Weight **2.04 CARATS**
Color Grade **FANCY LIGHT YELLOW**
Clarity Grade **VVS 2**

ADDITIONAL GRADING INFORMATION

Polish **EXCELLENT**
Symmetry **EXCELLENT**
Fluorescence **NONE**
Inscription(s) **IGI LG797645550**

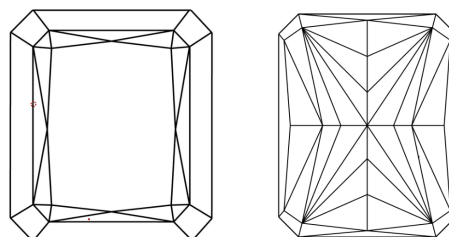
Comments: This Laboratory Grown Diamond was created by Chemical Vapor Deposition (CVD) growth process.

PROPORTIONS



Sample Image Used

CLARITY CHARACTERISTICS



KEY TO SYMBOLS

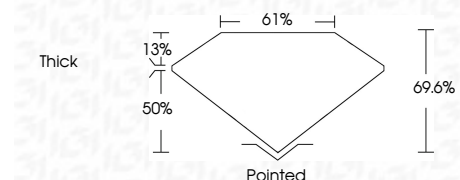
Red symbols indicate internal characteristics.
Green symbols indicate external characteristics.

COLOR

D E F G H I J Faint Very Light Light

CLARITY

FL	IF	VVS ¹⁻²	VS ¹⁻²	SI ¹⁻²	I ¹⁻³
Flawless	Internally Flawless	Very Very Slightly Included	Very Slightly Included	Slightly Included	Included



ADDITIONAL GRADING INFORMATION

Polish **EXCELLENT**
Symmetry **EXCELLENT**
Fluorescence **NONE**
Inscription(s) **IGI LG797645550**
Comments: This Laboratory Grown Diamond was created by Chemical Vapor Deposition (CVD) growth process.



IGI



May 6, 2026
IGI Report No LG797645550
CUT CORNERED RECT. MODIFIED BRILLIANT
8.28 X 6.09 X 4.24 MM
2.04 CARATS
FANCY LIGHT YELLOW
VVS 2
69.6%
61%
Thick
Pointed
EXCELLENT
EXCELLENT
NONE
IGI LG797645550

Comments: This Laboratory Grown Diamond was created by Chemical Vapor Deposition (CVD) growth process.