



ELECTRONIC COPY

LG797647234 Report verification at igi.org



May 7, 2026 IGI Report Number LG797647234 Description LABORATORY GROWN DIAMOND Shape and Cutting Style CUSHION MODIFIED BRILLIANT Measurements 9.28 X 7.26 X 4.83 MM GRADING RESULTS Carat Weight 2.58 CARATS Color Grade D Clarity Grade VVS 2

LABORATORY GROWN DIAMOND REPORT

May 7, 2026 IGI Report Number LG797647234 Description LABORATORY GROWN DIAMOND Shape and Cutting Style CUSHION MODIFIED BRILLIANT Measurements 9.28 X 7.26 X 4.83 MM

GRADING RESULTS

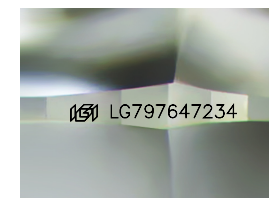
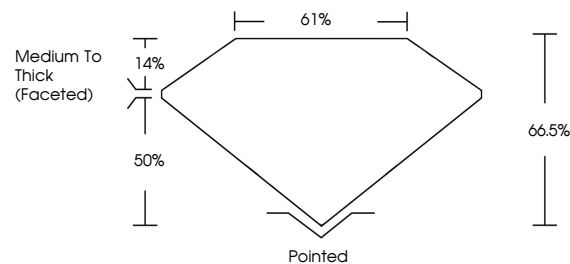
Carat Weight 2.58 CARATS Color Grade D Clarity Grade VVS 2

ADDITIONAL GRADING INFORMATION

Polish EXCELLENT Symmetry EXCELLENT Fluorescence NONE Inscription(s) IGI LG797647234

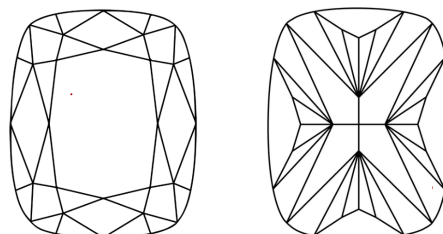
Comments: This Laboratory Grown Diamond was created by Chemical Vapor Deposition (CVD) growth process. Type IIa

PROPORTIONS



Sample Image Used

CLARITY CHARACTERISTICS



KEY TO SYMBOLS

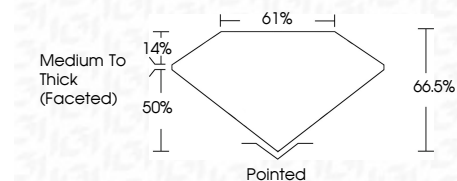
Red symbols indicate internal characteristics. Green symbols indicate external characteristics.

COLOR

D E F G H I J Faint Very Light Light

CLARITY

FL IF VVS 1-2 VS 1-2 SI 1-2 I 1-3 Flawless Internally Flawless Very Very Slightly Included Very Slightly Included Slightly Included Included



ADDITIONAL GRADING INFORMATION

Polish EXCELLENT Symmetry EXCELLENT Fluorescence NONE Inscription(s) IGI LG797647234 Comments: This Laboratory Grown Diamond was created by Chemical Vapor Deposition (CVD) growth process. Type IIa



May 7, 2026 IGI Report No LG797647234 CUSHION MODIFIED BRILLIANT 9.28 X 7.26 X 4.83 MM 2.58 CARATS D VVS 2 66.5% 61% Medium To Thick (Faceted) Pointed EXCELLENT EXCELLENT NONE IGI LG797647234 Comments: This Laboratory Grown Diamond was created by Chemical Vapor Deposition (CVD) growth process. Type IIa