



**ELECTRONIC COPY**

LG797657064  
Report verification at igi.org



May 2, 2026  
IGI Report Number **LG797657064**  
Description **LABORATORY GROWN DIAMOND**  
Shape and Cutting Style **ROUND BRILLIANT**  
Measurements **12.46 - 12.50 X 7.36 MM**  
**GRADING RESULTS**  
Carat Weight **7.02 CARATS**  
Color Grade **E**  
Clarity Grade **VVS 2**  
Cut Grade **EXCELLENT**

May 2, 2026  
IGI Report Number **LG797657064**  
Description **LABORATORY GROWN DIAMOND**  
Shape and Cutting Style **ROUND BRILLIANT**  
Measurements **12.46 - 12.50 X 7.36 MM**

**GRADING RESULTS**

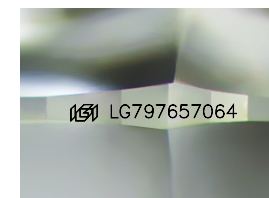
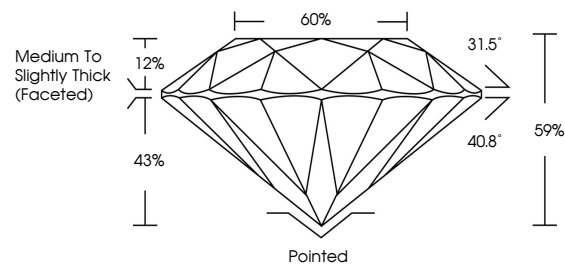
Carat Weight **7.02 CARATS**  
Color Grade **E**  
Clarity Grade **VVS 2**  
Cut Grade **EXCELLENT**

**ADDITIONAL GRADING INFORMATION**

Polish **EXCELLENT**  
Symmetry **EXCELLENT**  
Fluorescence **NONE**  
Inscription(s) **IGI LG797657064**

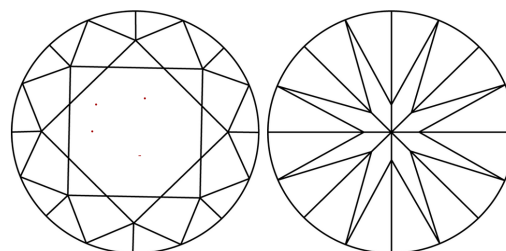
Comments: This Laboratory Grown Diamond was created by Chemical Vapor Deposition (CVD) growth process.  
Type IIa

**PROPORTIONS**



Sample Image Used

**CLARITY CHARACTERISTICS**



**KEY TO SYMBOLS**

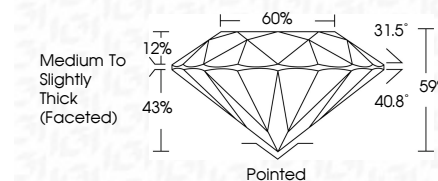
Red symbols indicate internal characteristics.  
Green symbols indicate external characteristics.

**COLOR**

D E F G H I J Faint Very Light Light

**CLARITY**

FL	IF	VVS <sup>1-2</sup>	VS <sup>1-2</sup>	SI <sup>1-2</sup>	I <sup>1-3</sup>
Flawless	Internally Flawless	Very Very Slightly Included	Very Slightly Included	Slightly Included	Included



**ADDITIONAL GRADING INFORMATION**

Polish **EXCELLENT**  
Symmetry **EXCELLENT**  
Fluorescence **NONE**  
Inscription(s) **IGI LG797657064**  
Comments: This Laboratory Grown Diamond was created by Chemical Vapor Deposition (CVD) growth process.  
Type IIa



May 2, 2026  
IGI Report No **LG797657064**  
**ROUND BRILLIANT**  
12.46 - 12.50 X 7.36 MM  
7.02 CARATS  
E  
VVS 2  
EXCELLENT  
E  
VVS 2  
EXCELLENT  
None  
IGI LG797657064  
Pointed  
EXCELLENT  
EXCELLENT  
NONE  
None  
IGI LG797657064  
Comments: This Laboratory Grown Diamond was created by Chemical Vapor Deposition (CVD) growth process.  
Type IIa