



ELECTRONIC COPY

LG797664143
Report verification at igi.org



May 9, 2026

IGI Report Number **LG797664143**

Description **LABORATORY GROWN DIAMOND**

Shape and Cutting Style **CUT CORNERED
RECTANGULAR MODIFIED
BRILLIANT**

Measurements **7.71 X 5.14 X 3.35 MM**

GRADING RESULTS

Carat Weight **1.12 CARAT**

Color Grade **FANCY VIVID BLUE**

Clarity Grade **VVS 2**

May 9, 2026

IGI Report Number **LG797664143**

Description **LABORATORY GROWN DIAMOND**

Shape and Cutting Style **CUT CORNERED RECTANGULAR
MODIFIED BRILLIANT**

Measurements **7.71 X 5.14 X 3.35 MM**

GRADING RESULTS

Carat Weight **1.12 CARAT**

Color Grade **FANCY VIVID BLUE**

Clarity Grade **VVS 2**

ADDITIONAL GRADING INFORMATION

Polish **EXCELLENT**

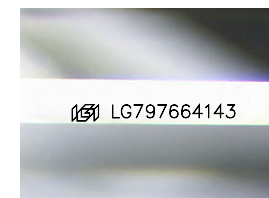
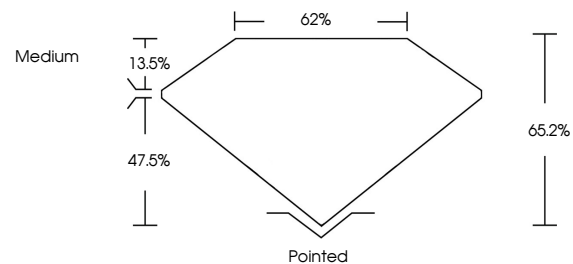
Symmetry **EXCELLENT**

Fluorescence **NONE**

Inscription(s) **IGI LG797664143**

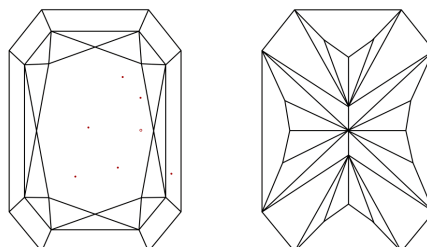
Comments: This Laboratory Grown Diamond was created by Chemical Vapor Deposition (CVD) growth process.
Indications of post-growth treatment.

PROPORTIONS



Sample Image Used

CLARITY CHARACTERISTICS



KEY TO SYMBOLS

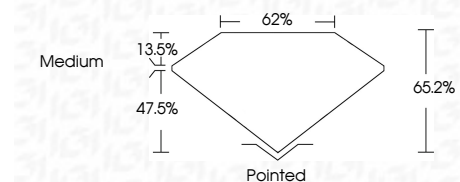
Red symbols indicate internal characteristics.
Green symbols indicate external characteristics.

COLOR

D E F G H I J Faint Very Light Light

CLARITY

FL	IF	VVS ¹⁻²	VS ¹⁻²	SI ¹⁻²	I ¹⁻³
Flawless	Internally Flawless	Very Very Slightly Included	Very Slightly Included	Slightly Included	Included



ADDITIONAL GRADING INFORMATION

Polish **EXCELLENT**

Symmetry **EXCELLENT**

Fluorescence **NONE**

Inscription(s) **IGI LG797664143**

Comments: This Laboratory Grown Diamond was created by Chemical Vapor Deposition (CVD) growth process.
Indications of post-growth treatment.



IGI



May 9, 2026
IGI Report No LG797664143
CUT CORNERED RECT. MODIFIED BRILLIANT

1.12 CARAT
Carat Weight
FANCY VIVID BLUE
Color Grade

VVS 2
Depth 47.5%
Table 62%
Girdle Medium

Pointed
EXCELLENT
EXCELLENT
NONE
Inscription(s) IGI LG797664143

Comments: This Laboratory Grown Diamond was created by Chemical Vapor Deposition (CVD) growth process.
Indications of post-growth treatment.