



ELECTRONIC COPY

LG797666516
Report verification at igi.org



May 8, 2026
IGI Report Number **LG797666516**
Description **LABORATORY GROWN DIAMOND**
Shape and Cutting Style **CUT CORNERED
RECTANGULAR MODIFIED
BRILLIANT**
Measurements **12.15 X 8.01 X 5.03 MM**
GRADING RESULTS
Carat Weight **4.44 CARATS**
Color Grade **FANCY INTENSE PINK**
Clarity Grade **VS 1**

May 8, 2026
IGI Report Number **LG797666516**
Description **LABORATORY GROWN DIAMOND**
Shape and Cutting Style **CUT CORNERED RECTANGULAR
MODIFIED BRILLIANT**
Measurements **12.15 X 8.01 X 5.03 MM**

GRADING RESULTS

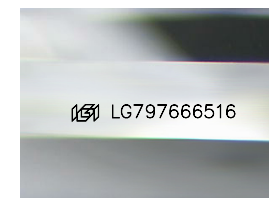
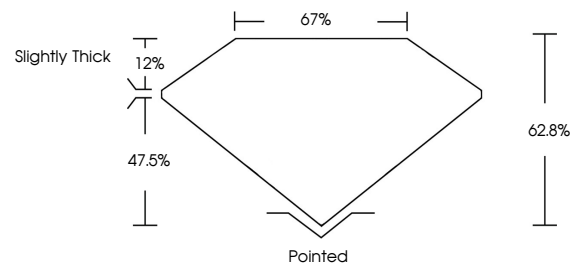
Carat Weight **4.44 CARATS**
Color Grade **FANCY INTENSE PINK**
Clarity Grade **VS 1**

ADDITIONAL GRADING INFORMATION

Polish **EXCELLENT**
Symmetry **EXCELLENT**
Fluorescence **SLIGHT**
Inscription(s) **IGI LG797666516**

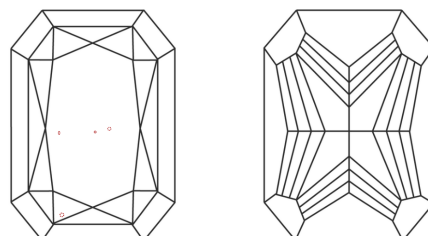
Comments: This Laboratory Grown Diamond was created by Chemical Vapor Deposition (CVD) growth process. Indications of post-growth treatment.

PROPORTIONS



Sample Image Used

CLARITY CHARACTERISTICS



KEY TO SYMBOLS

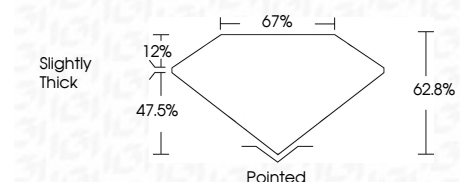
Red symbols indicate internal characteristics.
Green symbols indicate external characteristics.

COLOR

D E F G H I J Faint Very Light Light

CLARITY

FL	IF	VS ¹⁻²	VS ¹⁻²	SI ¹⁻²	I ¹⁻³
Flawless	Internally Flawless	Very Very Slightly Included	Very Slightly Included	Slightly Included	Included



ADDITIONAL GRADING INFORMATION

Polish **EXCELLENT**
Symmetry **EXCELLENT**
Fluorescence **SLIGHT**
Inscription(s) **IGI LG797666516**
Comments: This Laboratory Grown Diamond was created by Chemical Vapor Deposition (CVD) growth process. Indications of post-growth treatment.



May 8, 2026
IGI Report No LG797666516
CUT CORNERED RECT. MODIFIED BRILLIANT
12.15 X 8.01 X 5.03 MM
4.44 CARATS
FANCY INTENSE PINK
VS 1
62.8%
67%
Slightly Thick
Pointed
EXCELLENT
EXCELLENT
SLIGHT
IGI LG797666516
Comments: This Laboratory Grown Diamond was created by Chemical Vapor Deposition (CVD) growth process. Indications of post-growth treatment.