



ELECTRONIC COPY

LG797676160
Report verification at igi.org



May 7, 2026
IGI Report Number LG797676160
Description LABORATORY GROWN DIAMOND
Shape and Cutting Style SQUARE CUSHION MODIFIED BRILLIANT
Measurements 6.92 X 6.91 X 4.69 MM
GRADING RESULTS
Carat Weight 2.02 CARATS
Color Grade FANCY INTENSE YELLOW
Clarity Grade VS 1

May 7, 2026
IGI Report Number LG797676160
Description LABORATORY GROWN DIAMOND
Shape and Cutting Style SQUARE CUSHION MODIFIED BRILLIANT
Measurements 6.92 X 6.91 X 4.69 MM

GRADING RESULTS

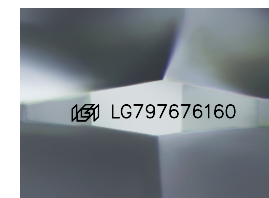
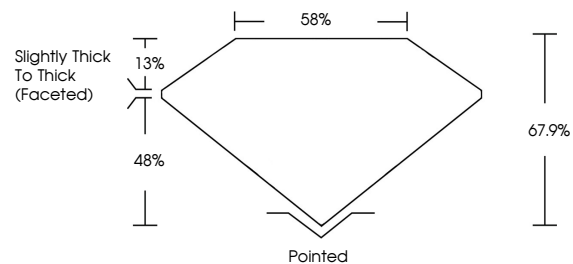
Carat Weight 2.02 CARATS
Color Grade FANCY INTENSE YELLOW
Clarity Grade VS 1

ADDITIONAL GRADING INFORMATION

Polish EXCELLENT
Symmetry EXCELLENT
Fluorescence NONE
Inscription(s) IGI LG797676160

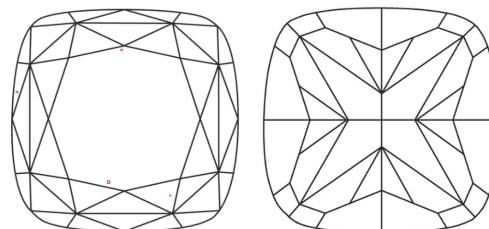
Comments: This Laboratory Grown Diamond was created by Chemical Vapor Deposition (CVD) growth process.

PROPORTIONS



Sample Image Used

CLARITY CHARACTERISTICS



KEY TO SYMBOLS

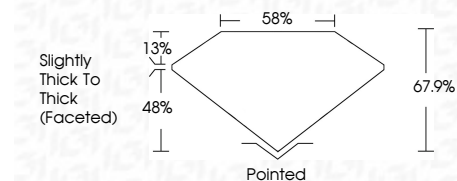
Red symbols indicate internal characteristics.
Green symbols indicate external characteristics.

COLOR

D E F G H I J Faint Very Light Light

CLARITY

FL IF VS 1-2 VS 2-3 SI 1-2 I 1-3
Flawless Internally Flawless Very Very Slightly Very Slightly Included Included



ADDITIONAL GRADING INFORMATION

Polish EXCELLENT
Symmetry EXCELLENT
Fluorescence NONE
Inscription(s) IGI LG797676160
Comments: This Laboratory Grown Diamond was created by Chemical Vapor Deposition (CVD) growth process.



May 7, 2026
IGI Report No. LG797676160
SQUARE CUSHION MODIFIED BRILLIANT
2.02 CARATS
6.92 X 6.91 X 4.69 MM
FANCY INTENSE YELLOW
VS 1
67.9%
58%
Slightly Thick To Thick (Faceted)
Pointed
EXCELLENT
EXCELLENT
NONE
IGI LG797676160
Comments: This Laboratory Grown Diamond was created by Chemical Vapor Deposition (CVD) growth process.