



ELECTRONIC COPY

LG797677147
Report verification at igi.org



May 14, 2026

IGI Report Number **LG797677147**

Description **LABORATORY GROWN DIAMOND**

Shape and Cutting Style **ROUND BRILLIANT**

Measurements **6.47 - 6.51 X 4.00 MM**

GRADING RESULTS

Carat Weight **1.04 CARAT**

Color Grade **F**

Clarity Grade **VVS 2**

Cut Grade **IDEAL**

May 14, 2026

IGI Report Number **LG797677147**

Description **LABORATORY GROWN DIAMOND**

Shape and Cutting Style **ROUND BRILLIANT**

Measurements **6.47 - 6.51 X 4.00 MM**

GRADING RESULTS

Carat Weight **1.04 CARAT**

Color Grade **F**

Clarity Grade **VVS 2**

Cut Grade **IDEAL**

ADDITIONAL GRADING INFORMATION

Polish **EXCELLENT**

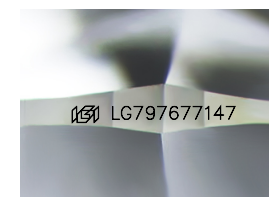
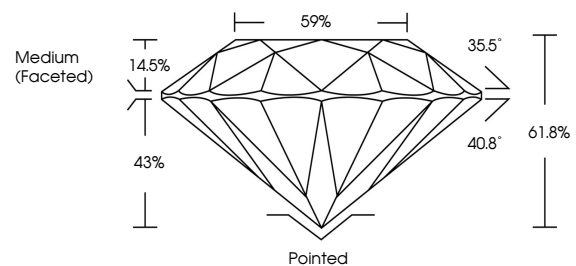
Symmetry **EXCELLENT**

Fluorescence **NONE**

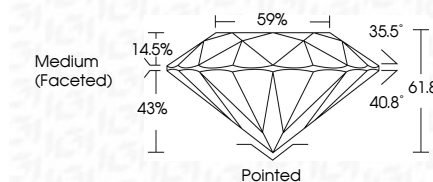
Inscription(s) **IGI LG797677147**

Comments: This Laboratory Grown Diamond was created by Chemical Vapor Deposition (CVD) growth process. Type IIa

PROPORTIONS



Sample Image Used



COLOR

D E F G H I J Faint Very Light Light

CLARITY

FL	IF	VS ¹⁻²	VS ¹⁻²	SI ¹⁻²	I ¹⁻³
Flawless	Internally Flawless	Very Very Slightly Included	Very Slightly Included	Slightly Included	Included

ADDITIONAL GRADING INFORMATION

Polish **EXCELLENT**

Symmetry **EXCELLENT**

Fluorescence **NONE**

Inscription(s) **IGI LG797677147**

Comments: This Laboratory Grown Diamond was created by Chemical Vapor Deposition (CVD) growth process. Type IIa



IGI



May 14, 2026	IGI Report No LG797677147	1.04 CARAT	F	Pointed
ROUND BRILLIANT	6.47 - 6.51 X 4.00 MM	EXCELLENT	VVS 2	EXCELLENT
Carat Weight	Color Grade	IDEAL	Clarity Grade	EXCELLENT
6.47 - 6.51 X 4.00 MM	61.8%	61.8%	Depth	NONE
Color Grade	43%	43%	Table	None
Clarity Grade	35.5°	35.5°	Girdle	None
VVS 2	35.5°	35.5°	Culet	None
IDEAL	40.8°	40.8°	Polish	EXCELLENT
61.8%	40.8°	40.8°	Symmetry	EXCELLENT
Medium (Faceted)	40.8°	40.8°	Fluorescence	NONE
None	40.8°	40.8°	Inscription(s)	IGI LG797677147
None	40.8°	40.8°	Comments:	This Laboratory Grown Diamond was created by Chemical Vapor Deposition (CVD) growth process. Type IIa