



**ELECTRONIC COPY**

LG797677176  
Report verification at igi.org



May 14, 2026

IGI Report Number **LG797677176**

Description **LABORATORY GROWN DIAMOND**

Shape and Cutting Style **ROUND BRILLIANT**

Measurements **6.55 - 6.59 X 4.03 MM**

**GRADING RESULTS**

Carat Weight **1.06 CARAT**

Color Grade **E**

Clarity Grade **VVS 2**

Cut Grade **IDEAL**

May 14, 2026

IGI Report Number **LG797677176**

Description **LABORATORY GROWN DIAMOND**

Shape and Cutting Style **ROUND BRILLIANT**

Measurements **6.55 - 6.59 X 4.03 MM**

**GRADING RESULTS**

Carat Weight **1.06 CARAT**

Color Grade **E**

Clarity Grade **VVS 2**

Cut Grade **IDEAL**

**ADDITIONAL GRADING INFORMATION**

Polish **EXCELLENT**

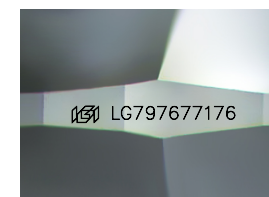
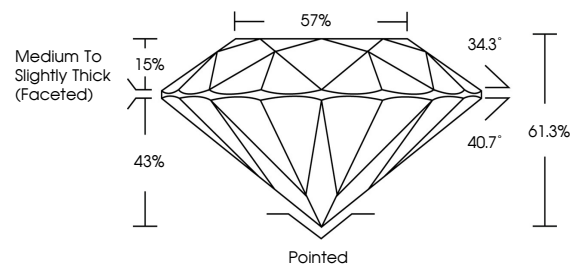
Symmetry **EXCELLENT**

Fluorescence **NONE**

Inscription(s) **IGI LG797677176**

Comments: This Laboratory Grown Diamond was created by Chemical Vapor Deposition (CVD) growth process. Type IIa

**PROPORTIONS**



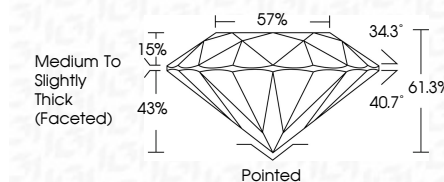
Sample Image Used

**COLOR**

D E F G H I J Faint Very Light Light

**CLARITY**

FL	IF	VS <sup>1-2</sup>	VS <sup>1-2</sup>	SI <sup>1-2</sup>	I <sup>1-3</sup>
Flawless	Internally Flawless	Very Very Slightly Included	Very Slightly Included	Slightly Included	Included



**ADDITIONAL GRADING INFORMATION**

Polish **EXCELLENT**

Symmetry **EXCELLENT**

Fluorescence **NONE**

Inscription(s) **IGI LG797677176**

Comments: This Laboratory Grown Diamond was created by Chemical Vapor Deposition (CVD) growth process. Type IIa



**IGI**



May 14, 2026  
IGI Report No LG797677176  
**ROUND BRILLIANT**  
6.55 - 6.59 X 4.03 MM  
1.06 CARAT  
Color Grade **E**  
Clarity Grade **VVS 2**  
Cut Grade **IDEAL**  
Depth **61.3%**  
Table **15%**  
Girdle **Medium To Slightly Thick (Faceted)**  
Culet **Pointed**  
Polish **EXCELLENT**  
Symmetry **EXCELLENT**  
Fluorescence **NONE**  
Inscription(s) **IGI LG797677176**  
Comments: This Laboratory Grown Diamond was created by Chemical Vapor Deposition (CVD) growth process. Type IIa