



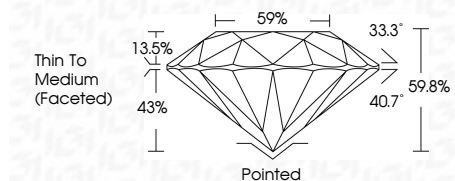
ELECTRONIC COPY

LG797677211
Report verification at igi.org



May 14, 2026
IGI Report Number **LG797677211**
Description **LABORATORY GROWN DIAMOND**
Shape and Cutting Style **ROUND BRILLIANT**
Measurements **6.61 - 6.65 X 3.97 MM**

GRADING RESULTS
Carat Weight **1.06 CARAT**
Color Grade **E**
Clarity Grade **VVS 2**
Cut Grade **IDEAL**



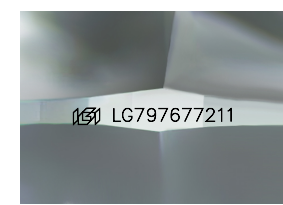
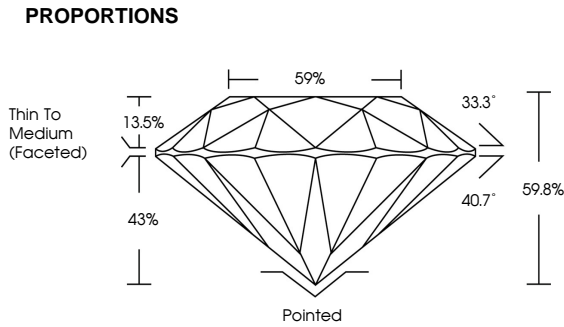
ADDITIONAL GRADING INFORMATION
Polish **EXCELLENT**
Symmetry **EXCELLENT**
Fluorescence **NONE**
Inscription(s) **IGI LG797677211**
Comments: This Laboratory Grown Diamond was created by Chemical Vapor Deposition (CVD) growth process. Type IIa



May 14, 2026
IGI Report No **LG797677211**
ROUND BRILLIANT
6.61 - 6.65 X 3.97 MM
1.06 CARAT
E
VVS 2
IDEAL
59.8%
Thin To Medium (Faceted)
Pointed
EXCELLENT
EXCELLENT
NONE
IGI LG797677211
Comments: This Laboratory Grown Diamond was created by Chemical Vapor Deposition (CVD) growth process. Type IIa

May 14, 2026
IGI Report Number **LG797677211**
Description **LABORATORY GROWN DIAMOND**
Shape and Cutting Style **ROUND BRILLIANT**
Measurements **6.61 - 6.65 X 3.97 MM**
GRADING RESULTS
Carat Weight **1.06 CARAT**
Color Grade **E**
Clarity Grade **VVS 2**
Cut Grade **IDEAL**

ADDITIONAL GRADING INFORMATION
Polish **EXCELLENT**
Symmetry **EXCELLENT**
Fluorescence **NONE**
Inscription(s) **IGI LG797677211**
Comments: This Laboratory Grown Diamond was created by Chemical Vapor Deposition (CVD) growth process. Type IIa



Sample Image Used

COLOR

| | | | | | | | | | |
|---|---|---|---|---|---|---|-------|------------|-------|
| D | E | F | G | H | I | J | Faint | Very Light | Light |
|---|---|---|---|---|---|---|-------|------------|-------|

CLARITY

| | | | | | |
|----------|---------------------|-----------------------------|------------------------|-------------------|------------------|
| FL | IF | VVS ¹⁻² | VS ¹⁻² | SI ¹⁻² | I ¹⁻³ |
| Flawless | Internally Flawless | Very Very Slightly Included | Very Slightly Included | Slightly Included | Included |

