



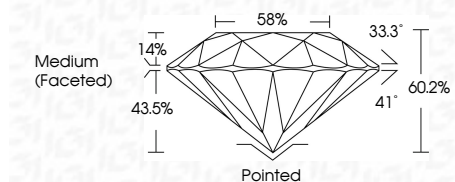
ELECTRONIC COPY

LG797677240
Report verification at igi.org



May 18, 2026
IGI Report Number **LG797677240**
Description **LABORATORY GROWN DIAMOND**
Shape and Cutting Style **ROUND BRILLIANT**
Measurements **6.51 - 6.56 X 3.94 MM**

GRADING RESULTS
Carat Weight **1.01 CARAT**
Color Grade **E**
Clarity Grade **VVS 2**
Cut Grade **IDEAL**



ADDITIONAL GRADING INFORMATION
Polish **EXCELLENT**
Symmetry **EXCELLENT**
Fluorescence **NONE**
Inscription(s) **IGI LG797677240**
Comments: This Laboratory Grown Diamond was created by Chemical Vapor Deposition (CVD) growth process. Type IIa



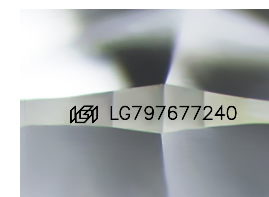
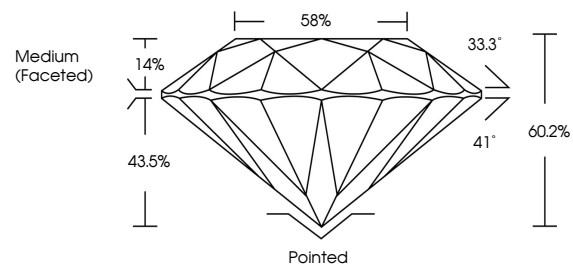
May 18, 2026
IGI Report No LG797677240
ROUND BRILLIANT
6.51 - 6.56 X 3.94 MM
1.01 CARAT
E
VVS 2
IDEAL
60.2%
58%
Medium (Faceted)
Pointed
EXCELLENT
EXCELLENT
NONE
IGI LG797677240
Comments: This Laboratory Grown Diamond was created by Chemical Vapor Deposition (CVD) growth process. Type IIa

May 18, 2026
IGI Report Number **LG797677240**
Description **LABORATORY GROWN DIAMOND**
Shape and Cutting Style **ROUND BRILLIANT**
Measurements **6.51 - 6.56 X 3.94 MM**
GRADING RESULTS
Carat Weight **1.01 CARAT**
Color Grade **E**
Clarity Grade **VVS 2**
Cut Grade **IDEAL**

ADDITIONAL GRADING INFORMATION
Polish **EXCELLENT**
Symmetry **EXCELLENT**
Fluorescence **NONE**
Inscription(s) **IGI LG797677240**

Comments: This Laboratory Grown Diamond was created by Chemical Vapor Deposition (CVD) growth process. Type IIa

PROPORTIONS



Sample Image Used

COLOR

D E F G H I J Faint Very Light Light

CLARITY

FL	IF	VS ¹⁻²	VS ¹⁻²	SI ¹⁻²	I ¹⁻³
Flawless	Internally Flawless	Very Very Slightly Included	Very Slightly Included	Slightly Included	Included

