



ELECTRONIC COPY

LG797690613
Report verification at igi.org



May 13, 2026

IGI Report Number **LG797690613**

Description **LABORATORY GROWN DIAMOND**

Shape and Cutting Style **CUT CORNERED
RECTANGULAR MODIFIED
BRILLIANT**

Measurements **9.75 X 6.75 X 4.53 MM**

GRADING RESULTS

Carat Weight **2.65 CARATS**

Color Grade **D**

Clarity Grade **VS 1**

May 13, 2026

IGI Report Number **LG797690613**

Description **LABORATORY GROWN DIAMOND**

Shape and Cutting Style **CUT CORNERED RECTANGULAR
MODIFIED BRILLIANT**

Measurements **9.75 X 6.75 X 4.53 MM**

GRADING RESULTS

Carat Weight **2.65 CARATS**

Color Grade **D**

Clarity Grade **VS 1**

ADDITIONAL GRADING INFORMATION

Polish **EXCELLENT**

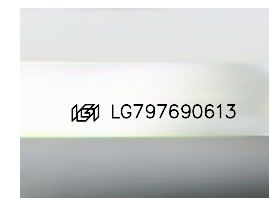
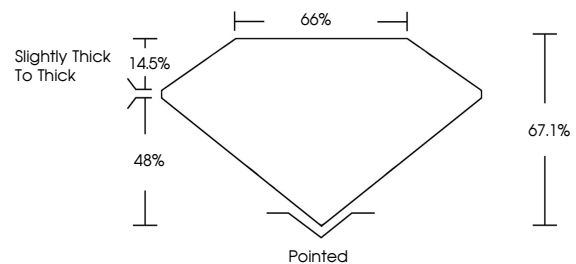
Symmetry **EXCELLENT**

Fluorescence **NONE**

Inscription(s) **IGI LG797690613**

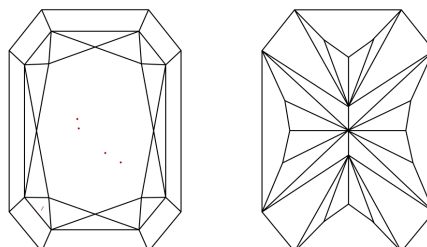
Comments: This Laboratory Grown Diamond was created by Chemical Vapor Deposition (CVD) growth process. Type IIa

PROPORTIONS



Sample Image Used

CLARITY CHARACTERISTICS



KEY TO SYMBOLS

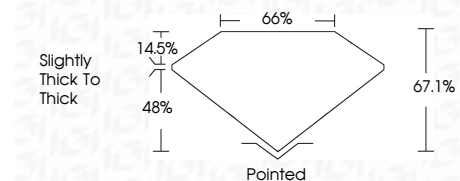
Red symbols indicate internal characteristics.
Green symbols indicate external characteristics.

COLOR

D E F G H I J Faint Very Light Light

CLARITY

FL	IF	VS ¹⁻²	VS ¹⁻²	SI ¹⁻²	I ¹⁻³
Flawless	Internally Flawless	Very Very Slightly Included	Very Slightly Included	Slightly Included	Included



ADDITIONAL GRADING INFORMATION

Polish **EXCELLENT**

Symmetry **EXCELLENT**

Fluorescence **NONE**

Inscription(s) **IGI LG797690613**

Comments: This Laboratory Grown Diamond was created by Chemical Vapor Deposition (CVD) growth process. Type IIa



IGI



May 13, 2026
IGI Report No LG797690613
CUT CORNERED RECT. MODIFIED BRILLIANT
9.75 X 6.75 X 4.53 MM
2.65 CARATS
D
2.65 CARATS
D
VS 1
67.1%
48%
Slightly Thick To Thick
Pointed
EXCELLENT
EXCELLENT
NONE
IGI LG797690613
Comments: This Laboratory Grown Diamond was created by Chemical Vapor Deposition (CVD) growth process. Type IIa