



ELECTRONIC COPY

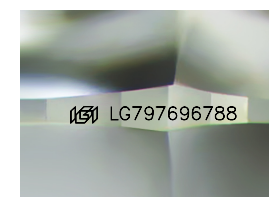
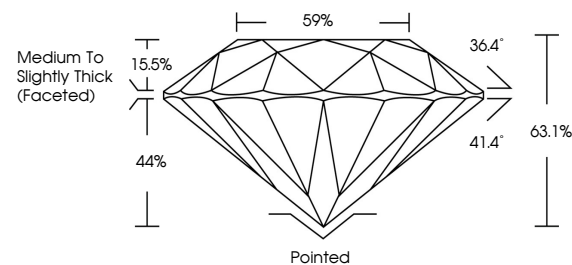
LG797696788
Report verification at igi.org



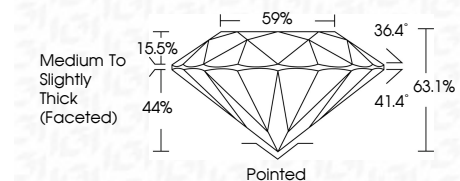
May 7, 2026
IGI Report Number LG797696788
Description LABORATORY GROWN DIAMOND
Shape and Cutting Style ROUND BRILLIANT
Measurements 6.53 - 6.55 X 4.13 MM
GRADING RESULTS
Carat Weight 1.09 CARAT
Color Grade G
Clarity Grade VVS 1
Cut Grade EXCELLENT

May 7, 2026
IGI Report Number LG797696788
Description LABORATORY GROWN DIAMOND
Shape and Cutting Style ROUND BRILLIANT
Measurements 6.53 - 6.55 X 4.13 MM

PROPORTIONS



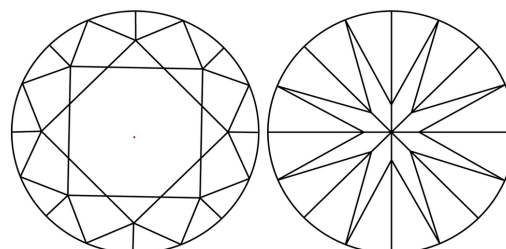
Sample Image Used



GRADING RESULTS

Carat Weight 1.09 CARAT
Color Grade G
Clarity Grade VVS 1
Cut Grade EXCELLENT

CLARITY CHARACTERISTICS



KEY TO SYMBOLS

Red symbols indicate internal characteristics.
Green symbols indicate external characteristics.

COLOR

D E F G H I J Faint Very Light Light

CLARITY

FL IF VVS 1-2 VS 1-2 SI 1-2 I 1-3
Flawless Internally Flawless Very Very Slightly Included Very Slightly Included Slightly Included Included

ADDITIONAL GRADING INFORMATION

Polish EXCELLENT
Symmetry EXCELLENT
Fluorescence NONE
Inscription(s) IGI LG797696788
Comments: This Laboratory Grown Diamond was created by Chemical Vapor Deposition (CVD) growth process. Type IIa

ADDITIONAL GRADING INFORMATION

Polish EXCELLENT
Symmetry EXCELLENT
Fluorescence NONE
Inscription(s) IGI LG797696788

Comments: This Laboratory Grown Diamond was created by Chemical Vapor Deposition (CVD) growth process. Type IIa



May 7, 2026
IGI Report No LG797696788
ROUND BRILLIANT
6.53 - 6.55 X 4.13 MM
1.09 CARAT
Color Grade G
Clarity Grade VVS 1
Depth 63.1%
Table 59%
Medium To Slightly Thick (Faceted)
Cutler Pointed
Polish EXCELLENT
Symmetry EXCELLENT
Fluorescence NONE
Inscription(s) IGI LG797696788
Comments: This Laboratory Grown Diamond was created by Chemical Vapor Deposition (CVD) growth process. Type IIa