



ELECTRONIC COPY

LG798601250
Report verification at igi.org



May 7, 2026
IGI Report Number LG798601250
Description LABORATORY GROWN DIAMOND
Shape and Cutting Style CUT CORNERED RECTANGULAR MODIFIED BRILLIANT
Measurements 9.98 X 7.22 X 4.82 MM
GRADING RESULTS
Carat Weight 3.00 CARATS
Color Grade G
Clarity Grade VS 1

May 7, 2026
IGI Report Number LG798601250
Description LABORATORY GROWN DIAMOND
Shape and Cutting Style CUT CORNERED RECTANGULAR MODIFIED BRILLIANT
Measurements 9.98 X 7.22 X 4.82 MM

GRADING RESULTS

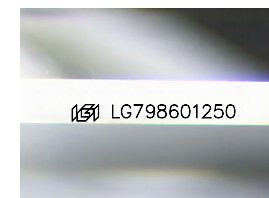
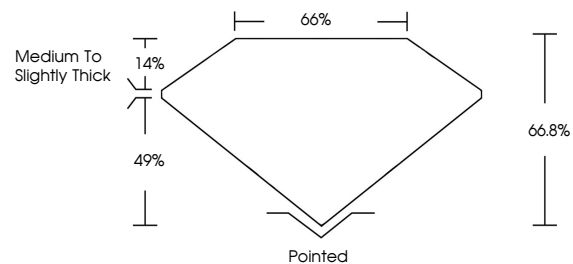
Carat Weight 3.00 CARATS
Color Grade G
Clarity Grade VS 1

ADDITIONAL GRADING INFORMATION

Polish EXCELLENT
Symmetry EXCELLENT
Fluorescence NONE
Inscription(s) LG798601250

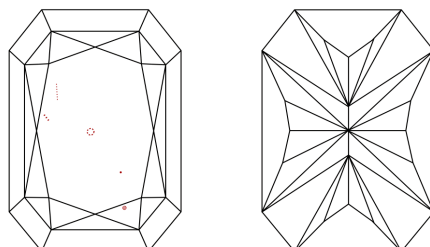
Comments: This Laboratory Grown Diamond was created by Chemical Vapor Deposition (CVD) growth process. Type IIa

PROPORTIONS



Sample Image Used

CLARITY CHARACTERISTICS



KEY TO SYMBOLS

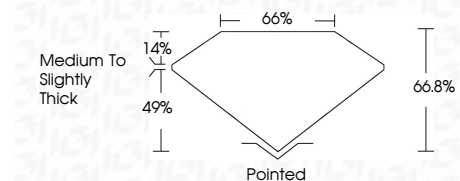
Red symbols indicate internal characteristics.
Green symbols indicate external characteristics.

COLOR

D E F G H I J Faint Very Light Light

CLARITY

FL IF VS 1-2 VS 2-3 SI 1-2 I 1-3
Flawless Internally Flawless Very Very Slightly Included Very Slightly Included Slightly Included Included



ADDITIONAL GRADING INFORMATION

Polish EXCELLENT
Symmetry EXCELLENT
Fluorescence NONE
Inscription(s) LG798601250
Comments: This Laboratory Grown Diamond was created by Chemical Vapor Deposition (CVD) growth process. Type IIa



May 7, 2026
IGI Report No LG798601250
CUT CORNERED RECT. MODIFIED BRILLIANT
9.98 X 7.22 X 4.82 MM
3.00 CARATS
G
3.00 CARATS
G
VS 1
66.8%
65%
Medium to Slightly Thick
Pointed
EXCELLENT
EXCELLENT
NONE
None
Inscription(s)
IGI LG798601250
Comments: This Laboratory Grown Diamond was created by Chemical Vapor Deposition (CVD) growth process. Type IIa