



ELECTRONIC COPY

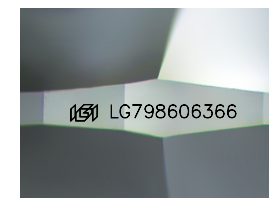
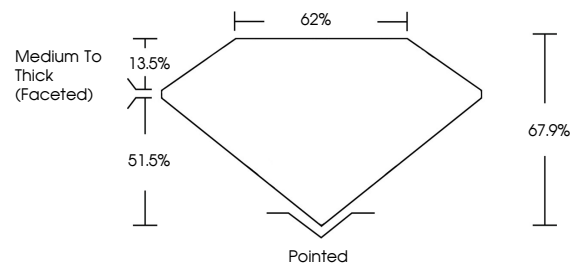
LG798606366
Report verification at igi.org



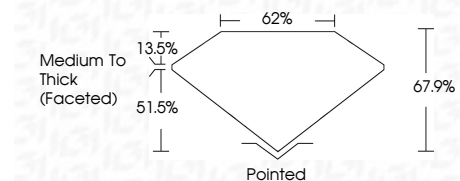
May 9, 2026
IGI Report Number **LG798606366**
Description **LABORATORY GROWN DIAMOND**
Shape and Cutting Style **CUSHION MODIFIED BRILLIANT**
Measurements **10.22 X 7.41 X 5.03 MM**
GRADING RESULTS
Carat Weight **3.04 CARATS**
Color Grade **D**
Clarity Grade **VS 2**

May 9, 2026
IGI Report Number **LG798606366**
Description **LABORATORY GROWN DIAMOND**
Shape and Cutting Style **CUSHION MODIFIED BRILLIANT**
Measurements **10.22 X 7.41 X 5.03 MM**

PROPORTIONS



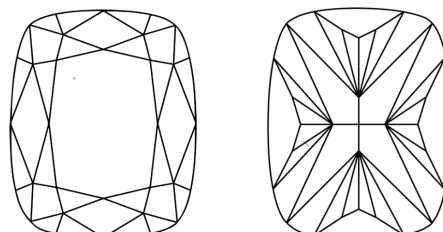
Sample Image Used



GRADING RESULTS

Carat Weight **3.04 CARATS**
Color Grade **D**
Clarity Grade **VS 2**

CLARITY CHARACTERISTICS



COLOR

D E F G H I J Faint Very Light Light

CLARITY

FL	IF	VS ¹⁻²	VS ¹⁻²	SI ¹⁻²	I ¹⁻³
Flawless	Internally Flawless	Very Very Slightly Included	Very Slightly Included	Slightly Included	Included

ADDITIONAL GRADING INFORMATION

Polish **EXCELLENT**
Symmetry **EXCELLENT**
Fluorescence **NONE**
Inscription(s) **IGI LG798606366**
Comments: This Laboratory Grown Diamond was created by Chemical Vapor Deposition (CVD) growth process. Type IIa

ADDITIONAL GRADING INFORMATION

Polish **EXCELLENT**
Symmetry **EXCELLENT**
Fluorescence **NONE**
Inscription(s) **IGI LG798606366**

KEY TO SYMBOLS

Red symbols indicate internal characteristics.
Green symbols indicate external characteristics.



IGI

May 9, 2026
IGI Report No. **LG798606366**
CUSHION MODIFIED BRILLIANT
3.04 CARATS
D
Carat Weight **3.04 CARATS**
Color Grade **D**
Clarity Grade **VS 2**
Depth **67.9%**
Table **62%**
Girdle **Medium To Thick (Faceted)**
Culet **Pointed**
Polish **EXCELLENT**
Symmetry **EXCELLENT**
Fluorescence **NONE**
Inscription(s) **IGI LG798606366**

Comments: This Laboratory Grown Diamond was created by Chemical Vapor Deposition (CVD) growth process. Type IIa