



ELECTRONIC COPY

LG798613399
Report verification at igi.org



May 9, 2026
IGI Report Number LG798613399
Description LABORATORY GROWN DIAMOND
Shape and Cutting Style CUT CORNERED RECTANGULAR MODIFIED BRILLIANT
Measurements 13.59 X 9.65 X 6.42 MM
GRADING RESULTS
Carat Weight 7.20 CARATS
Color Grade G
Clarity Grade VS 1

May 9, 2026
IGI Report Number LG798613399
Description LABORATORY GROWN DIAMOND
Shape and Cutting Style CUT CORNERED RECTANGULAR MODIFIED BRILLIANT
Measurements 13.59 X 9.65 X 6.42 MM

GRADING RESULTS

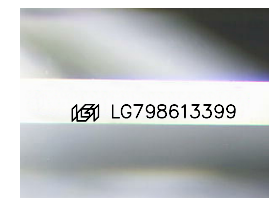
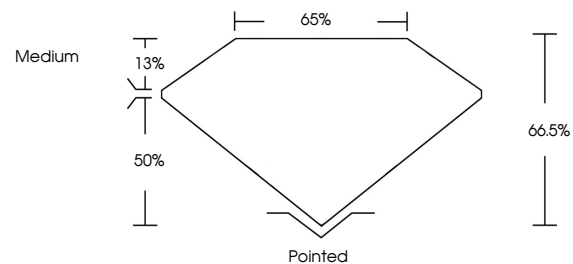
Carat Weight 7.20 CARATS
Color Grade G
Clarity Grade VS 1

ADDITIONAL GRADING INFORMATION

Polish EXCELLENT
Symmetry EXCELLENT
Fluorescence NONE
Inscription(s) LG798613399

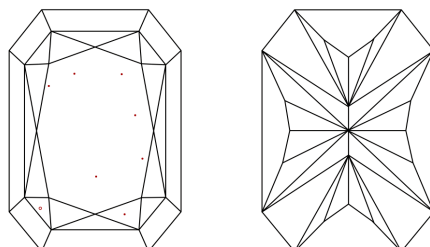
Comments: This Laboratory Grown Diamond was created by Chemical Vapor Deposition (CVD) growth process. Type IIa

PROPORTIONS



Sample Image Used

CLARITY CHARACTERISTICS



KEY TO SYMBOLS

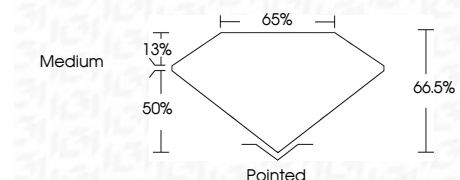
Red symbols indicate internal characteristics.
Green symbols indicate external characteristics.

COLOR

D E F G H I J Faint Very Light Light

CLARITY

FL IF VS 1-2 VS 2-3 SI 1-2 I 1-3
Flawless Internally Flawless Very Very Slightly Included Very Slightly Included Slightly Included Included



ADDITIONAL GRADING INFORMATION

Polish EXCELLENT
Symmetry EXCELLENT
Fluorescence NONE
Inscription(s) LG798613399
Comments: This Laboratory Grown Diamond was created by Chemical Vapor Deposition (CVD) growth process. Type IIa



May 9, 2026
IGI Report No LG798613399
CUT CORNERED RECT. MODIFIED BRILLIANT
13.59 X 9.65 X 6.42 MM
7.20 CARATS
G
Color Grade
VS 1
66.5%
50%
Medium
Pointed
EXCELLENT
EXCELLENT
NONE
LG798613399
Comments: This Laboratory Grown Diamond was created by Chemical Vapor Deposition (CVD) growth process. Type IIa