



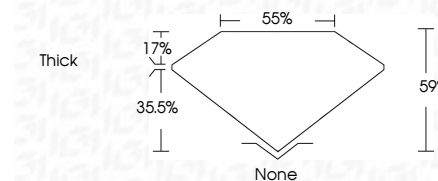
**ELECTRONIC COPY**

LG798613794  
Report verification at igi.org



May 4, 2026  
IGI Report Number **LG798613794**  
Description **LABORATORY GROWN DIAMOND**  
Shape and Cutting Style **MODIFIED PEAR STEP CUT**  
Measurements **11.44 X 5.83 X 3.44 MM**

**GRADING RESULTS**  
Carat Weight **1.58 CARAT**  
Color Grade **E**  
Clarity Grade **VVS 2**



**ADDITIONAL GRADING INFORMATION**  
Polish **EXCELLENT**  
Symmetry **EXCELLENT**  
Fluorescence **NONE**  
Inscription(s) **IGI LG798613794**  
Comments: This Laboratory Grown Diamond was created by Chemical Vapor Deposition (CVD) growth process. Type IIa



May 4, 2026  
IGI Report No LG798613794  
**MODIFIED PEAR STEP CUT**  
11.44 X 5.83 X 3.44 MM  
1.58 CARAT  
E  
VVS 2  
59%  
55%  
Thick  
None  
EXCELLENT  
EXCELLENT  
NONE  
IGI LG798613794  
Comments: This Laboratory Grown Diamond was created by Chemical Vapor Deposition (CVD) growth process. Type IIa

**LABORATORY GROWN DIAMOND REPORT**

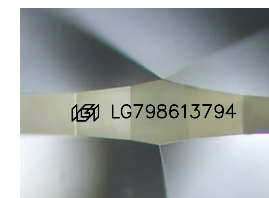
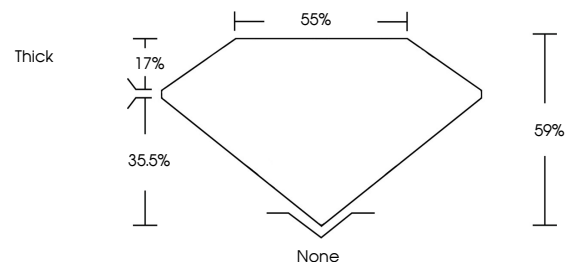
May 4, 2026  
IGI Report Number **LG798613794**  
Description **LABORATORY GROWN DIAMOND**  
Shape and Cutting Style **MODIFIED PEAR STEP CUT**  
Measurements **11.44 X 5.83 X 3.44 MM**

**GRADING RESULTS**  
Carat Weight **1.58 CARAT**  
Color Grade **E**  
Clarity Grade **VVS 2**

**ADDITIONAL GRADING INFORMATION**  
Polish **EXCELLENT**  
Symmetry **EXCELLENT**  
Fluorescence **NONE**  
Inscription(s) **IGI LG798613794**

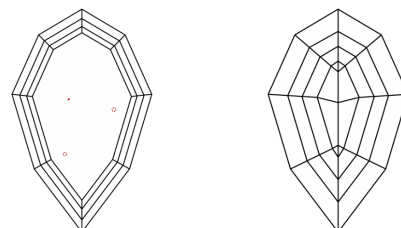
Comments: This Laboratory Grown Diamond was created by Chemical Vapor Deposition (CVD) growth process. Type IIa

**PROPORTIONS**



Sample Image Used

**CLARITY CHARACTERISTICS**



**KEY TO SYMBOLS**

Red symbols indicate internal characteristics.  
Green symbols indicate external characteristics.

**COLOR**

D E F G H I J Faint Very Light Light

**CLARITY**

FL	IF	VVS <sup>1-2</sup>	VS <sup>1-2</sup>	SI <sup>1-2</sup>	I <sup>1-3</sup>
Flawless	Internally Flawless	Very Very Slightly Included	Very Slightly Included	Slightly Included	Included

