



ELECTRONIC COPY

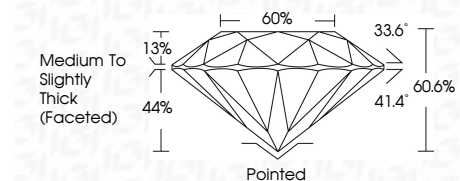
LG798617568 Report verification at igi.org



May 9, 2026 IGI Report Number LG798617568 Description LABORATORY GROWN DIAMOND Shape and Cutting Style ROUND BRILLIANT Measurements 6.47 - 6.54 X 3.94 MM

GRADING RESULTS

Carat Weight 1.00 CARAT Color Grade D Clarity Grade VVS 2 Cut Grade IDEAL



ADDITIONAL GRADING INFORMATION

Polish EXCELLENT Symmetry EXCELLENT Fluorescence NONE Inscription(s) LG798617568 Comments: This Laboratory Grown Diamond was created by Chemical Vapor Deposition (CVD) growth process. Type IIa



May 9, 2026 IGI Report No LG798617568 ROUND BRILLIANT 6.47 - 6.54 X 3.94 MM 1.00 CARAT D VVS 2 IDEAL 60.6% Medium To Slightly Thick (Faceted) Pointed EXCELLENT EXCELLENT NONE LG798617568

Comments: This Laboratory Grown Diamond was created by Chemical Vapor Deposition (CVD) growth process. Type IIa

LABORATORY GROWN DIAMOND REPORT

May 9, 2026 IGI Report Number LG798617568 Description LABORATORY GROWN DIAMOND Shape and Cutting Style ROUND BRILLIANT Measurements 6.47 - 6.54 X 3.94 MM

GRADING RESULTS

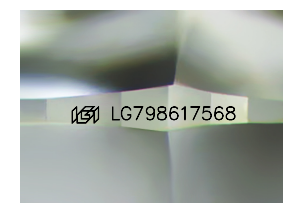
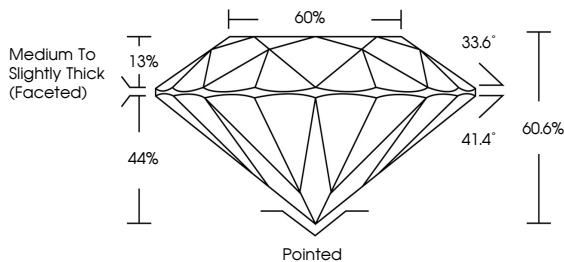
Carat Weight 1.00 CARAT Color Grade D Clarity Grade VVS 2 Cut Grade IDEAL

ADDITIONAL GRADING INFORMATION

Polish EXCELLENT Symmetry EXCELLENT Fluorescence NONE Inscription(s) LG798617568

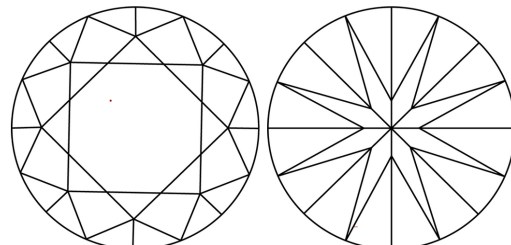
Comments: This Laboratory Grown Diamond was created by Chemical Vapor Deposition (CVD) growth process. Type IIa

PROPORTIONS



Sample Image Used

CLARITY CHARACTERISTICS



KEY TO SYMBOLS

Red symbols indicate internal characteristics. Green symbols indicate external characteristics.

COLOR

D E F G H I J Faint Very Light Light

CLARITY

FL IF VVS 1-2 VS 1-2 SI 1-2 I 1-3 Flawless Internally Flawless Very Very Slightly Included Very Slightly Included Slightly Included Included

