



ELECTRONIC COPY

LG798618268 Report verification at igi.org



May 18, 2026 IGI Report Number LG798618268 Description LABORATORY GROWN DIAMOND Shape and Cutting Style CUT CORNERED RECTANGULAR MODIFIED BRILLIANT Measurements 13.37 X 10.03 X 6.75 MM GRADING RESULTS Carat Weight 8.02 CARATS Color Grade G Clarity Grade VS 1

May 18, 2026 IGI Report Number LG798618268 Description LABORATORY GROWN DIAMOND Shape and Cutting Style CUT CORNERED RECTANGULAR MODIFIED BRILLIANT Measurements 13.37 X 10.03 X 6.75 MM

GRADING RESULTS

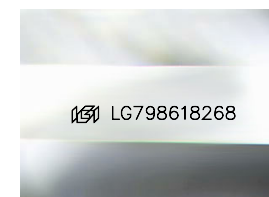
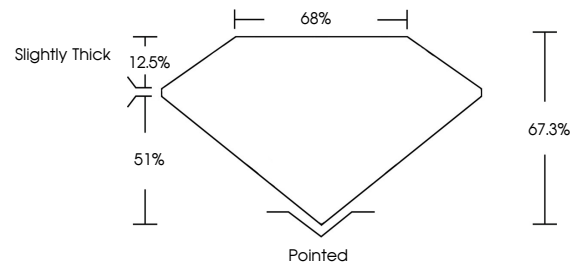
Carat Weight 8.02 CARATS Color Grade G Clarity Grade VS 1

ADDITIONAL GRADING INFORMATION

Polish EXCELLENT Symmetry EXCELLENT Fluorescence NONE Inscription(s) LG798618268

Comments: This Laboratory Grown Diamond was created by Chemical Vapor Deposition (CVD) growth process. Type IIa

PROPORTIONS



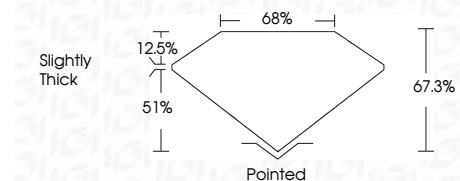
Sample Image Used

COLOR

D E F G H I J Faint Very Light Light

CLARITY

FL IF VS 1-2 VS 1-2 SI 1-2 I 1-3 Flawless Internally Flawless Very Very Slightly Included Very Slightly Included Slightly Included Included



ADDITIONAL GRADING INFORMATION

Polish EXCELLENT Symmetry EXCELLENT Fluorescence NONE Inscription(s) LG798618268 Comments: This Laboratory Grown Diamond was created by Chemical Vapor Deposition (CVD) growth process. Type IIa



May 18, 2026 IGI Report No LG798618268 CUT CORNERED RECT. MODIFIED BRILLIANT 13.37 X 10.03 X 6.75 MM 8.02 CARATS G VS 1 67.3% 65% Slightly Thick Pointed EXCELLENT EXCELLENT NONE NONE LG798618268 Comments: This Laboratory Grown Diamond was created by Chemical Vapor Deposition (CVD) growth process. Type IIa