



ELECTRONIC COPY

LG798622838
Report verification at igi.org



May 6, 2026

IGI Report Number **LG798622838**

Description **LABORATORY GROWN DIAMOND**

Shape and Cutting Style **PEAR BRILLIANT**

Measurements **17.89 X 11.53 X 7.32 MM**

GRADING RESULTS

Carat Weight **9.19 CARATS**

Color Grade **E**

Clarity Grade **VVS 2**

May 6, 2026

IGI Report Number **LG798622838**

Description **LABORATORY GROWN DIAMOND**

Shape and Cutting Style **PEAR BRILLIANT**

Measurements **17.89 X 11.53 X 7.32 MM**

GRADING RESULTS

Carat Weight **9.19 CARATS**

Color Grade **E**

Clarity Grade **VVS 2**

ADDITIONAL GRADING INFORMATION

Polish **EXCELLENT**

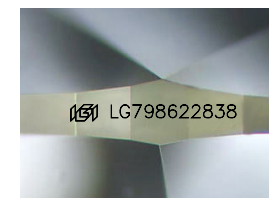
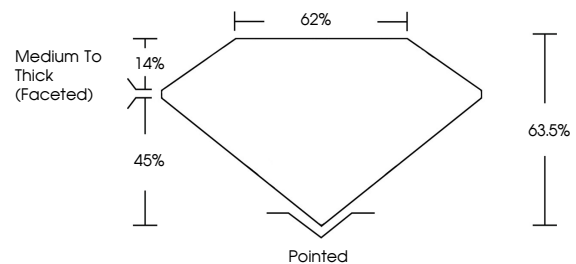
Symmetry **EXCELLENT**

Fluorescence **NONE**

Inscription(s) **LG798622838**

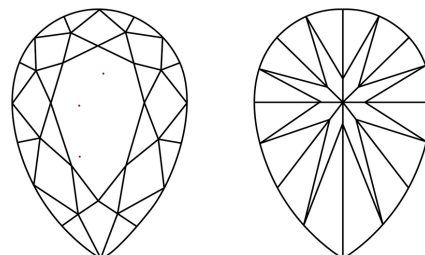
Comments: This Laboratory Grown Diamond was created by Chemical Vapor Deposition (CVD) growth process.
Type IIa

PROPORTIONS



Sample Image Used

CLARITY CHARACTERISTICS



KEY TO SYMBOLS

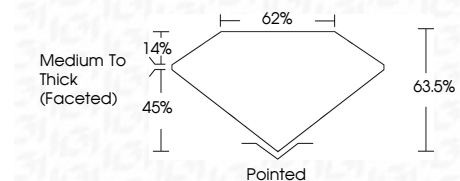
Red symbols indicate internal characteristics.
Green symbols indicate external characteristics.

COLOR

D E F G H I J Faint Very Light Light

CLARITY

FL	IF	VS ¹⁻²	VS ¹⁻²	SI ¹⁻²	I ¹⁻³
Flawless	Internally Flawless	Very Very Slightly Included	Very Slightly Included	Slightly Included	Included



ADDITIONAL GRADING INFORMATION

Polish **EXCELLENT**

Symmetry **EXCELLENT**

Fluorescence **NONE**

Inscription(s) **LG798622838**

Comments: This Laboratory Grown Diamond was created by Chemical Vapor Deposition (CVD) growth process.
Type IIa



IGI



May 6, 2026
IGI Report No LG798622838
PEAR BRILLIANT

9.19 CARATS
E

17.89 X 11.53 X 7.32 MM
VVS 2
63.5%
45%
62%

Medium To Thick (Faceted)
Pointed
EXCELLENT
EXCELLENT
NONE
None
IGI LG798622838

Comments: This Laboratory Grown Diamond was created by Chemical Vapor Deposition (CVD) growth process.
Type IIa