



ELECTRONIC COPY

LG799604389
Report verification at igi.org



May 9, 2026
IGI Report Number: LG799604389
Description: LABORATORY GROWN DIAMOND
Shape and Cutting Style: CUT CORNERED RECTANGULAR MODIFIED BRILLIANT
Measurements: 9.99 X 7.19 X 4.85 MM
GRADING RESULTS
Carat Weight: 3.05 CARATS
Color Grade: F
Clarity Grade: VS 1

LABORATORY GROWN DIAMOND REPORT

May 9, 2026
IGI Report Number: LG799604389
Description: LABORATORY GROWN DIAMOND
Shape and Cutting Style: CUT CORNERED RECTANGULAR MODIFIED BRILLIANT
Measurements: 9.99 X 7.19 X 4.85 MM

GRADING RESULTS

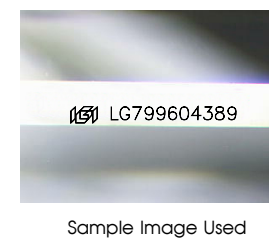
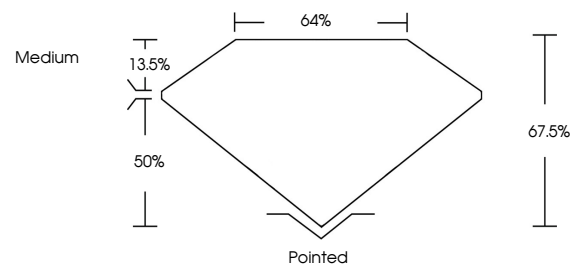
Carat Weight: 3.05 CARATS
Color Grade: F
Clarity Grade: VS 1

ADDITIONAL GRADING INFORMATION

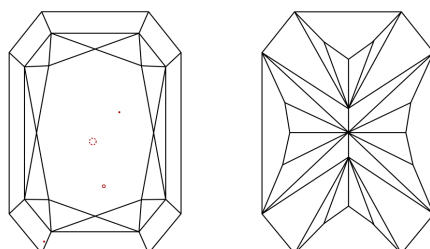
Polish: EXCELLENT
Symmetry: EXCELLENT
Fluorescence: NONE
Inscription(s): IGI LG799604389

Comments: This Laboratory Grown Diamond was created by Chemical Vapor Deposition (CVD) growth process. Type IIa

PROPORTIONS



CLARITY CHARACTERISTICS



KEY TO SYMBOLS

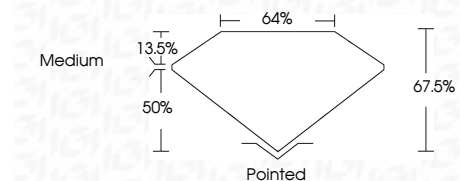
Red symbols indicate internal characteristics.
Green symbols indicate external characteristics.

COLOR

D E F G H I J Faint Very Light Light

CLARITY

FL IF VS 1-2 VS 2-3 SI 1-2 I 1-3
Flawless Internally Flawless Very Very Slightly Included Very Slightly Included Slightly Included Included



ADDITIONAL GRADING INFORMATION

Polish: EXCELLENT
Symmetry: EXCELLENT
Fluorescence: NONE
Inscription(s): IGI LG799604389
Comments: This Laboratory Grown Diamond was created by Chemical Vapor Deposition (CVD) growth process. Type IIa



May 9, 2026
IGI Report No: LG799604389
CUT CORNERED RECT. MODIFIED BRILLIANT
3.05 CARATS F
9.99 X 7.19 X 4.85 MM
Color Grade: F
Clarity Grade: VS 1
Table: 67.5%
Girdle: 4/5
Medium
Culet: Pointed
Polish: EXCELLENT
Symmetry: EXCELLENT
Fluorescence: NONE
Inscription(s): IGI LG799604389
Comments: This Laboratory Grown Diamond was created by Chemical Vapor Deposition (CVD) growth process. Type IIa