



ELECTRONIC COPY

LG799606098
Report verification at igi.org



May 8, 2026
IGI Report Number: LG799606098
Description: LABORATORY GROWN DIAMOND
Shape and Cutting Style: ROUND BRILLIANT
Measurements: 6.50 - 6.54 X 4.03 MM
GRADING RESULTS
Carat Weight: 1.05 CARAT
Color Grade: D
Clarity Grade: VVS 2
Cut Grade: EXCELLENT

May 8, 2026
IGI Report Number: LG799606098
Description: LABORATORY GROWN DIAMOND
Shape and Cutting Style: ROUND BRILLIANT
Measurements: 6.50 - 6.54 X 4.03 MM

GRADING RESULTS

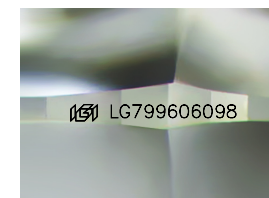
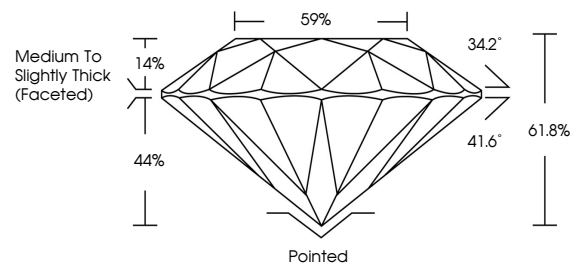
Carat Weight: 1.05 CARAT
Color Grade: D
Clarity Grade: VVS 2
Cut Grade: EXCELLENT

ADDITIONAL GRADING INFORMATION

Polish: EXCELLENT
Symmetry: EXCELLENT
Fluorescence: NONE
Inscription(s): IGI LG799606098

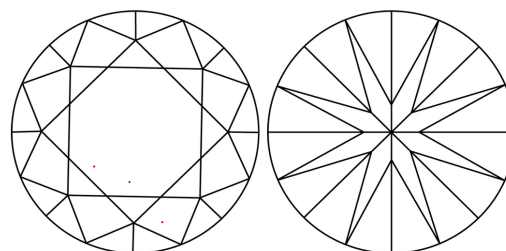
Comments: This Laboratory Grown Diamond was created by Chemical Vapor Deposition (CVD) growth process. Type IIa

PROPORTIONS



Sample Image Used

CLARITY CHARACTERISTICS



KEY TO SYMBOLS

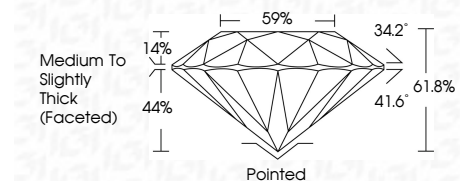
Red symbols indicate internal characteristics.
Green symbols indicate external characteristics.

COLOR

D E F G H I J Faint Very Light Light

CLARITY

FL IF VVS 1-2 VS 1-2 SI 1-2 I 1-3
Flawless Internally Flawless Very Very Slightly Included Very Slightly Included Slightly Included Included



ADDITIONAL GRADING INFORMATION

Polish: EXCELLENT
Symmetry: EXCELLENT
Fluorescence: NONE
Inscription(s): IGI LG799606098
Comments: This Laboratory Grown Diamond was created by Chemical Vapor Deposition (CVD) growth process. Type IIa



May 8, 2026
IGI Report No LG799606098
ROUND BRILLIANT
6.50 - 6.54 X 4.03 MM
1.05 CARAT
Color Grade: D
Clarity Grade: VVS 2
Depth: 61.8%
Table: 59%
Girdle: Medium To Slightly Thick (Faceted)
Culet: Pointed
Polish: EXCELLENT
Symmetry: EXCELLENT
Fluorescence: NONE
Inscriptions(s): IGI LG799606098
Comments: This Laboratory Grown Diamond was created by Chemical Vapor Deposition (CVD) growth process. Type IIa