



ELECTRONIC COPY

LG799606410
Report verification at igi.org



May 12, 2026
IGI Report Number **LG799606410**
Description **LABORATORY GROWN DIAMOND**
Shape and Cutting Style **SQUARE CUSHION MODIFIED BRILLIANT**
Measurements **11.60 X 11.15 X 7.31 MM**
GRADING RESULTS
Carat Weight **7.41 CARATS**
Color Grade **FANCY INTENSE PINK**
Clarity Grade **VS 1**

LABORATORY GROWN DIAMOND REPORT

May 12, 2026
IGI Report Number **LG799606410**
Description **LABORATORY GROWN DIAMOND**
Shape and Cutting Style **SQUARE CUSHION MODIFIED BRILLIANT**
Measurements **11.60 X 11.15 X 7.31 MM**

GRADING RESULTS

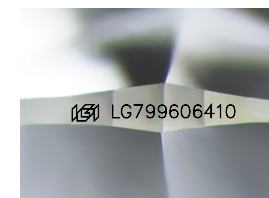
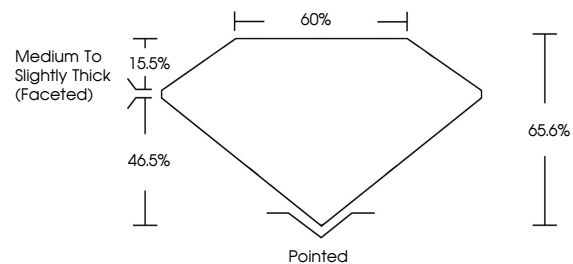
Carat Weight **7.41 CARATS**
Color Grade **FANCY INTENSE PINK**
Clarity Grade **VS 1**

ADDITIONAL GRADING INFORMATION

Polish **EXCELLENT**
Symmetry **EXCELLENT**
Fluorescence **SLIGHT**
Inscription(s) **LG799606410**

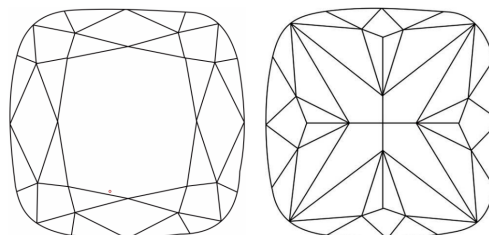
Comments: This Laboratory Grown Diamond was created by Chemical Vapor Deposition (CVD) growth process.
Indications of post-growth treatment.

PROPORTIONS



Sample Image Used

CLARITY CHARACTERISTICS



KEY TO SYMBOLS

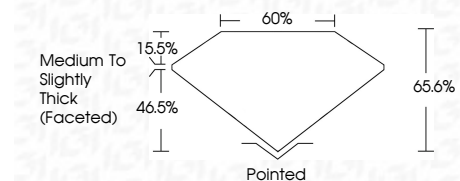
Red symbols indicate internal characteristics.
Green symbols indicate external characteristics.

COLOR

D E F G H I J Faint Very Light Light

CLARITY

FL	IF	VS ¹⁻²	VS ¹⁻²	SI ¹⁻²	I ¹⁻³
Flawless	Internally Flawless	Very Very Slightly Included	Very Slightly Included	Slightly Included	Included



ADDITIONAL GRADING INFORMATION

Polish **EXCELLENT**
Symmetry **EXCELLENT**
Fluorescence **SLIGHT**
Inscription(s) **LG799606410**
Comments: This Laboratory Grown Diamond was created by Chemical Vapor Deposition (CVD) growth process.
Indications of post-growth treatment.



May 12, 2026
IGI Report No **LG799606410**
SQUARE CUSHION MODIFIED BRILLIANT
11.60 X 11.15 X 7.31 MM
Carat Weight **7.41 CARATS**
Color Grade **FANCY INTENSE PINK**
Clarity Grade **VS 1**
Table **60%**
Depth **46.5%**
Girdle **Medium to Slightly Thick (Faceted)**
Culet **Pointed**
Polish **EXCELLENT**
Symmetry **EXCELLENT**
Fluorescence **SLIGHT**
Inscription(s) **LG799606410**
Comments: This Laboratory Grown Diamond was created by Chemical Vapor Deposition (CVD) growth process.
Indications of post-growth treatment.