



**ELECTRONIC COPY**

LG799606968  
Report verification at igi.org



May 11, 2026  
IGI Report Number **LG799606968**  
Description **LABORATORY GROWN DIAMOND**  
Shape and Cutting Style **SQUARE CUSHION MODIFIED BRILLIANT**  
Measurements **10.05 X 9.61 X 5.96 MM**  
**GRADING RESULTS**  
Carat Weight **5.31 CARATS**  
Color Grade **FANCY YELLOW**  
Clarity Grade **VS 2**

**LABORATORY GROWN DIAMOND REPORT**

May 11, 2026  
IGI Report Number **LG799606968**  
Description **LABORATORY GROWN DIAMOND**  
Shape and Cutting Style **SQUARE CUSHION MODIFIED BRILLIANT**  
Measurements **10.05 X 9.61 X 5.96 MM**

**GRADING RESULTS**

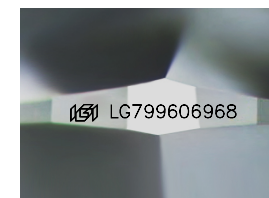
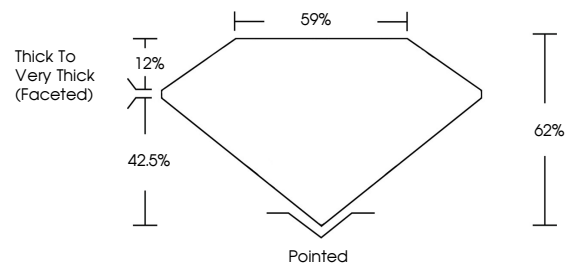
Carat Weight **5.31 CARATS**  
Color Grade **FANCY YELLOW**  
Clarity Grade **VS 2**

**ADDITIONAL GRADING INFORMATION**

Polish **EXCELLENT**  
Symmetry **EXCELLENT**  
Fluorescence **NONE**  
Inscription(s) **IGI LG799606968**

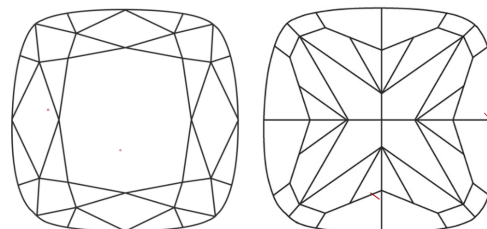
Comments: This Laboratory Grown Diamond was created by Chemical Vapor Deposition (CVD) growth process.

**PROPORTIONS**



Sample Image Used

**CLARITY CHARACTERISTICS**



**KEY TO SYMBOLS**

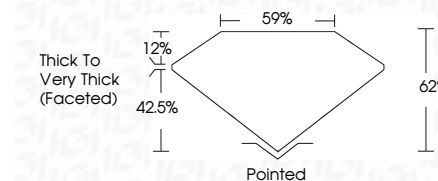
Red symbols indicate internal characteristics.  
Green symbols indicate external characteristics.

**COLOR**

D E F G H I J Faint Very Light Light

**CLARITY**

FL	IF	VS <sup>1-2</sup>	VS <sup>1-2</sup>	SI <sup>1-2</sup>	I <sup>1-3</sup>
Flawless	Internally Flawless	Very Very Slightly Included	Very Slightly Included	Slightly Included	Included



**ADDITIONAL GRADING INFORMATION**

Polish **EXCELLENT**  
Symmetry **EXCELLENT**  
Fluorescence **NONE**  
Inscription(s) **IGI LG799606968**  
Comments: This Laboratory Grown Diamond was created by Chemical Vapor Deposition (CVD) growth process.



May 11, 2026  
IGI Report No. **LG799606968**  
**SQUARE CUSHION MODIFIED BRILLIANT**  
**5.31 CARATS**  
**FANCY YELLOW**  
**VS 2**  
**10.05 X 9.61 X 5.96 MM**  
Carat Weight  
Color Grade  
Clarity Grade  
Table  
Depth  
Girdle  
Thick to Very Thick (Faceted)  
Pointed  
EXCELLENT  
EXCELLENT  
NONE  
IGI LG799606968  
Comments: This Laboratory Grown Diamond was created by Chemical Vapor Deposition (CVD) growth process.