



ELECTRONIC COPY

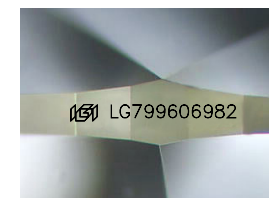
LG799606982
Report verification at igi.org



May 14, 2026
IGI Report Number **LG799606982**
Description **LABORATORY GROWN DIAMOND**

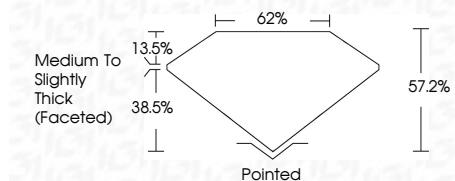
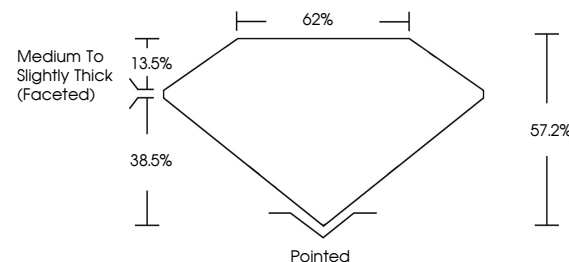
Shape and Cutting Style **PEAR MODIFIED BRILLIANT**
Measurements **11.34 X 6.96 X 3.98 MM**

GRADING RESULTS
Carat Weight **2.13 CARATS**
Color Grade **FANCY VIVID PINK**
Clarity Grade **VS 1**

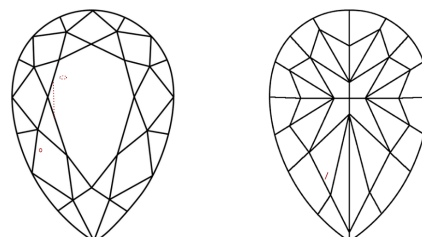


Sample Image Used

PROPORTIONS



CLARITY CHARACTERISTICS



KEY TO SYMBOLS

Red symbols indicate internal characteristics.
Green symbols indicate external characteristics.

COLOR

D E F G H I J Faint Very Light Light

CLARITY

FL	IF	VS ¹⁻²	VS ¹⁻²	SI ¹⁻²	I ¹⁻³
Flawless	Internally Flawless	Very Very Slightly Included	Very Slightly Included	Slightly Included	Included

ADDITIONAL GRADING INFORMATION

Polish **EXCELLENT**
Symmetry **EXCELLENT**
Fluorescence **STRONG**

Inscription(s) **IGI LG799606982**
Comments: This Laboratory Grown Diamond was created by Chemical Vapor Deposition (CVD) growth process. Indications of post-growth treatment.



IGI



May 14, 2026
IGI Report No **LG799606982**
PEAR MODIFIED BRILLIANT
2.13 CARATS
Carat Weight **FANCY VIVID PINK**
Color Grade **VS 1**
Depth **62%**
Table **Medium to Slightly Thick (Faceted)**
Girdle **Pointed**
Culet **EXCELLENT**
Polish **EXCELLENT**
Symmetry **STRONG**
Fluorescence **IGI LG799606982**
Inscription(s)

Comments: This Laboratory Grown Diamond was created by Chemical Vapor Deposition (CVD) growth process. Indications of post-growth treatment.