



ELECTRONIC COPY

LG799608697
Report verification at igi.org



May 27, 2026

IGI Report Number **LG799608697**

Description **LABORATORY GROWN DIAMOND**

Shape and Cutting Style **CUT CORNERED
RECTANGULAR MODIFIED
BRILLIANT**

Measurements **8.38 X 6.34 X 4.16 MM**

GRADING RESULTS

Carat Weight **2.07 CARATS**

Color Grade **FANCY INTENSE BLUE**

Clarity Grade **VS 1**

LABORATORY GROWN DIAMOND REPORT

May 27, 2026

IGI Report Number **LG799608697**

Description **LABORATORY GROWN DIAMOND**

Shape and Cutting Style **CUT CORNERED RECTANGULAR
MODIFIED BRILLIANT**

Measurements **8.38 X 6.34 X 4.16 MM**

GRADING RESULTS

Carat Weight **2.07 CARATS**

Color Grade **FANCY INTENSE BLUE**

Clarity Grade **VS 1**

ADDITIONAL GRADING INFORMATION

Polish **EXCELLENT**

Symmetry **EXCELLENT**

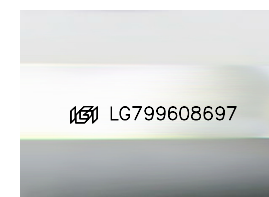
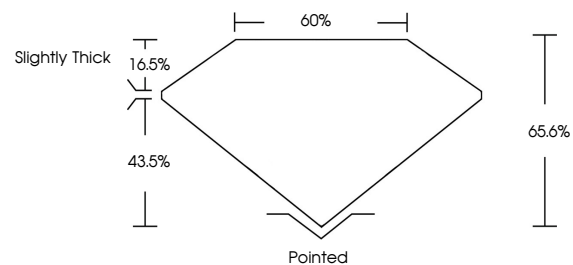
Fluorescence **NONE**

Inscription(s) **IGI LG799608697**

Comments: As Grown - No indication of post-growth treatment.

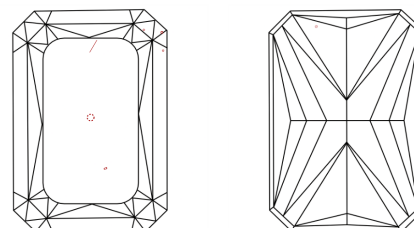
This Laboratory Grown Diamond was created by High Pressure High Temperature (HPHT) growth process.

PROPORTIONS



Sample Image Used

CLARITY CHARACTERISTICS



KEY TO SYMBOLS

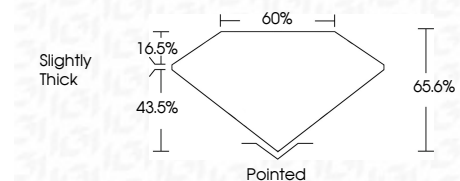
Red symbols indicate internal characteristics.
Green symbols indicate external characteristics.

COLOR

D E F G H I J Faint Very Light Light

CLARITY

FL	IF	VS ¹⁻²	VS ¹⁻²	SI ¹⁻²	I ¹⁻³
Flawless	Internally Flawless	Very Very Slightly Included	Very Slightly Included	Slightly Included	Included



ADDITIONAL GRADING INFORMATION

Polish **EXCELLENT**

Symmetry **EXCELLENT**

Fluorescence **NONE**

Inscription(s) **IGI LG799608697**

Comments: As Grown - No indication of post-growth treatment.

This Laboratory Grown Diamond was created by High Pressure High Temperature (HPHT) growth process.



IGI



May 27, 2026
IGI Report No LG799608697
CUT CORNERED RECT. MODIFIED BRILLIANT
8.38 X 6.34 X 4.16 MM
2.07 CARATS
FANCY INTENSE BLUE
VS 1
65.6%
43.5%
Slightly Thick
Pointed
EXCELLENT
EXCELLENT
NONE
IGI LG799608697
Comments: As Grown - No indication of post-growth treatment.
This Laboratory Grown Diamond was created by High Pressure High Temperature (HPHT) growth process.