



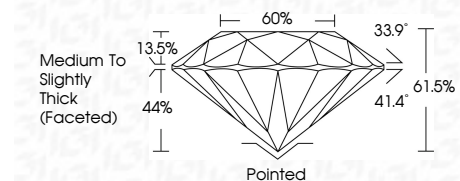
ELECTRONIC COPY

LG799609107 Report verification at igi.org



May 9, 2026 IGI Report Number LG799609107 Description LABORATORY GROWN DIAMOND Shape and Cutting Style ROUND BRILLIANT Measurements 6.48 - 6.50 X 3.99 MM

GRADING RESULTS Carat Weight 1.03 CARAT Color Grade E Clarity Grade VS 1 Cut Grade IDEAL



ADDITIONAL GRADING INFORMATION Polish EXCELLENT Symmetry EXCELLENT Fluorescence NONE Inscription(s) LG799609107 Comments: This Laboratory Grown Diamond was created by Chemical Vapor Deposition (CVD) growth process. Type IIa



May 9, 2026 IGI Report No LG799609107 ROUND BRILLIANT 6.48 - 6.50 X 3.99 MM 1.03 CARAT E VS 1 IDEAL 61.5% 60% Medium To Slightly Thick (Faceted) Pointed EXCELLENT EXCELLENT NONE LG799609107 Comments: This Laboratory Grown Diamond was created by Chemical Vapor Deposition (CVD) growth process. Type IIa

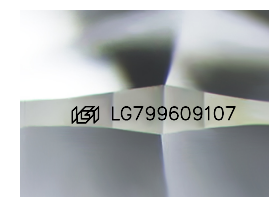
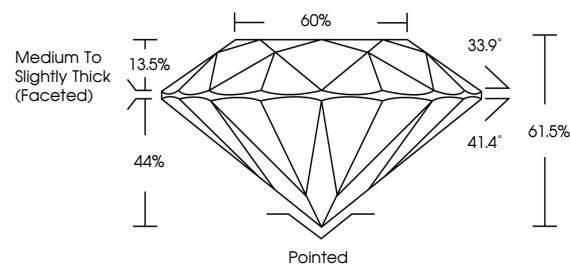
May 9, 2026 IGI Report Number LG799609107 Description LABORATORY GROWN DIAMOND Shape and Cutting Style ROUND BRILLIANT Measurements 6.48 - 6.50 X 3.99 MM

GRADING RESULTS Carat Weight 1.03 CARAT Color Grade E Clarity Grade VS 1 Cut Grade IDEAL

ADDITIONAL GRADING INFORMATION Polish EXCELLENT Symmetry EXCELLENT Fluorescence NONE Inscription(s) LG799609107

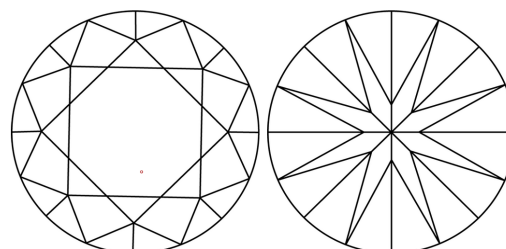
Comments: This Laboratory Grown Diamond was created by Chemical Vapor Deposition (CVD) growth process. Type IIa

PROPORTIONS



Sample Image Used

CLARITY CHARACTERISTICS



KEY TO SYMBOLS

Red symbols indicate internal characteristics. Green symbols indicate external characteristics.

COLOR

D E F G H I J Faint Very Light Light

CLARITY

FL IF VS 1-2 VS 2-3 SI 1-2 I 1-3 Flawless Internally Flawless Very Very Slightly Included Very Slightly Included Slightly Included Included

