



ELECTRONIC COPY

LG799613829 Report verification at igi.org



May 4, 2026 IGI Report Number LG799613829 Description LABORATORY GROWN DIAMOND Shape and Cutting Style CUT CORNERED RECTANGULAR MODIFIED BRILLIANT Measurements 11.79 X 8.12 X 5.58 MM GRADING RESULTS Carat Weight 5.03 CARATS Color Grade D Clarity Grade VVS 1

May 4, 2026 IGI Report Number LG799613829 Description LABORATORY GROWN DIAMOND Shape and Cutting Style CUT CORNERED RECTANGULAR MODIFIED BRILLIANT Measurements 11.79 X 8.12 X 5.58 MM

GRADING RESULTS

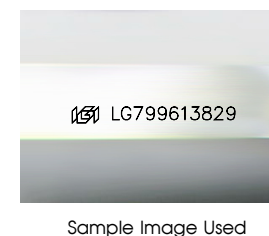
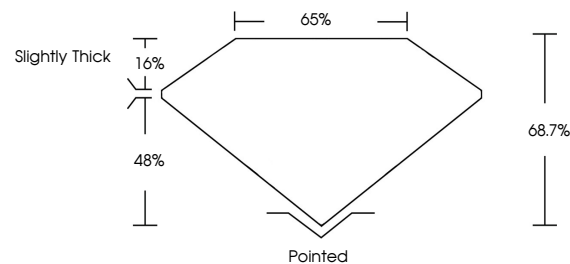
Carat Weight 5.03 CARATS Color Grade D Clarity Grade VVS 1

ADDITIONAL GRADING INFORMATION

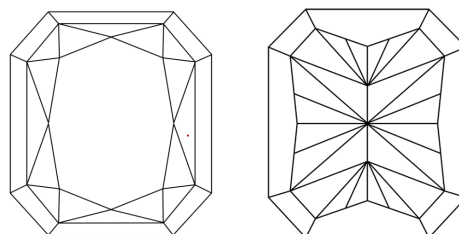
Polish EXCELLENT Symmetry EXCELLENT Fluorescence NONE Inscription(s) LG799613829

Comments: This Laboratory Grown Diamond was created by Chemical Vapor Deposition (CVD) growth process. Type IIa

PROPORTIONS



CLARITY CHARACTERISTICS



KEY TO SYMBOLS

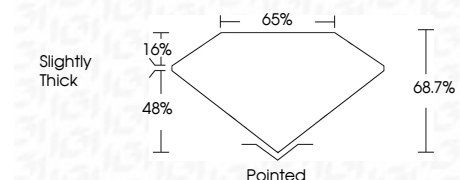
Red symbols indicate internal characteristics. Green symbols indicate external characteristics.

COLOR

D E F G H I J Faint Very Light Light

CLARITY

FL IF VVS 1-2 VS 1-2 SI 1-2 I 1-3 Flawless Internally Flawless Very Very Slightly Included Very Slightly Included Slightly Included Included



ADDITIONAL GRADING INFORMATION

Polish EXCELLENT Symmetry EXCELLENT Fluorescence NONE Inscription(s) LG799613829 Comments: This Laboratory Grown Diamond was created by Chemical Vapor Deposition (CVD) growth process. Type IIa



May 4, 2026 IGI Report No LG799613829 CUT CORNERED RECT. MODIFIED BRILLIANT 5.03 CARATS D 11.79 X 8.12 X 5.58 MM VVS 1 68.7% 65% Slightly Thick Pointed EXCELLENT EXCELLENT NONE NONE LG799613829 Comments: This Laboratory Grown Diamond was created by Chemical Vapor Deposition (CVD) growth process. Type IIa