



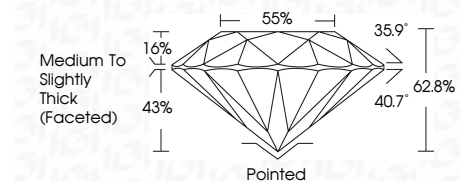
ELECTRONIC COPY

LG799615602 Report verification at igi.org



May 9, 2026 IGI Report Number LG799615602 Description LABORATORY GROWN DIAMOND Shape and Cutting Style ROUND BRILLIANT Measurements 6.41 - 6.45 X 4.04 MM

GRADING RESULTS Carat Weight 1.03 CARAT Color Grade E Clarity Grade VS 2 Cut Grade EXCELLENT

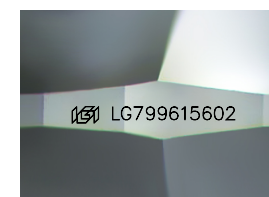


ADDITIONAL GRADING INFORMATION Polish EXCELLENT Symmetry EXCELLENT Fluorescence NONE Inscription(s) LG799615602 Comments: This Laboratory Grown Diamond was created by Chemical Vapor Deposition (CVD) growth process. Type IIa



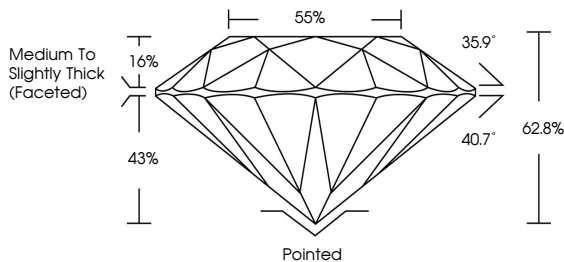
May 9, 2026 IGI Report No LG799615602 ROUND BRILLIANT 6.41 - 6.45 X 4.04 MM 1.03 CARAT E VS 2 EXCELLENT 62.8% 35.9° Medium To Slightly Thick (Faceted) Pointed EXCELLENT EXCELLENT NONE NONE LG799615602

Comments: This Laboratory Grown Diamond was created by Chemical Vapor Deposition (CVD) growth process. Type IIa

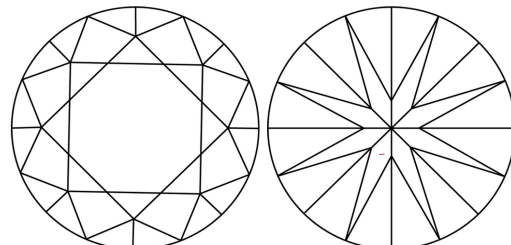


Sample Image Used

PROPORTIONS



CLARITY CHARACTERISTICS



KEY TO SYMBOLS

Red symbols indicate internal characteristics. Green symbols indicate external characteristics.

COLOR

Color scale table with categories D, E, F, G, H, I, J, Faint, Very Light, Light

CLARITY

Clarity scale table with categories FL, IF, VS 1-2, VS 1-2, SI 1-2, I 1-3, Flawless, Internally Flawless, Very Very Slightly Included, Very Slightly Included, Slightly Included, Included



May 9, 2026 IGI Report Number LG799615602 Description LABORATORY GROWN DIAMOND Shape and Cutting Style ROUND BRILLIANT Measurements 6.41 - 6.45 X 4.04 MM

GRADING RESULTS Carat Weight 1.03 CARAT Color Grade E Clarity Grade VS 2 Cut Grade EXCELLENT

ADDITIONAL GRADING INFORMATION Polish EXCELLENT Symmetry EXCELLENT Fluorescence NONE Inscription(s) LG799615602

Comments: This Laboratory Grown Diamond was created by Chemical Vapor Deposition (CVD) growth process. Type IIa