



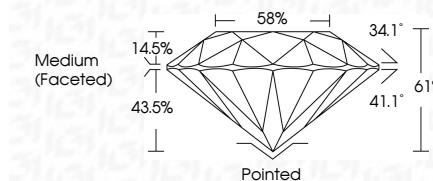
ELECTRONIC COPY

LG799616730 Report verification at igi.org



June 2, 2026 IGI Report Number LG799616730 Description LABORATORY GROWN DIAMOND Shape and Cutting Style ROUND BRILLIANT Measurements 12.42 - 12.45 X 7.58 MM

GRADING RESULTS Carat Weight 7.08 CARATS Color Grade E Clarity Grade VS 1 Cut Grade IDEAL

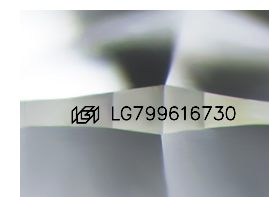


ADDITIONAL GRADING INFORMATION Polish EXCELLENT Symmetry EXCELLENT Fluorescence NONE Inscription(s) LG799616730 Comments: HEARTS & ARROWS This Laboratory Grown Diamond was created by Chemical Vapor Deposition (CVD) growth process. Type IIa



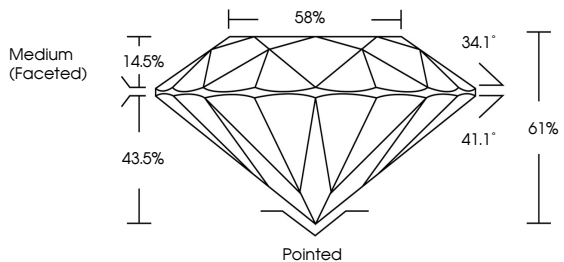
June 2, 2026 IGI Report No LG799616730 ROUND BRILLIANT 12.42 - 12.45 X 7.58 MM 7.08 CARATS E VS 1 IDEAL 61% 58% Medium (Faceted) Pointed EXCELLENT EXCELLENT NONE LG799616730

Comments: Hearts & Arrows This Laboratory Grown Diamond was created by Chemical Vapor Deposition (CVD) growth process. Type IIa

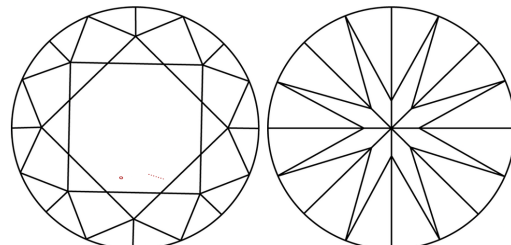


Sample Image Used

PROPORTIONS



CLARITY CHARACTERISTICS



KEY TO SYMBOLS Red symbols indicate internal characteristics. Green symbols indicate external characteristics.



COLOR

Table with color grades: D, E, F, G, H, I, J, Faint, Very Light, Light

CLARITY

Table with clarity grades: FL, IF, VS 1-2, VS 1-2, SI 1-2, I 1-3, Flawless, Internally Flawless, Very Very Slightly Included, Very Slightly Included, Slightly Included, Included

