



**ELECTRONIC COPY**

LG799618524  
Report verification at igi.org



May 12, 2026

IGI Report Number **LG799618524**

Description **LABORATORY GROWN DIAMOND**

Shape and Cutting Style **ROUND BRILLIANT**

Measurements **9.28 - 9.34 X 5.60 MM**

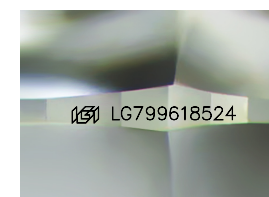
**GRADING RESULTS**

Carat Weight **3.01 CARATS**

Color Grade **E**

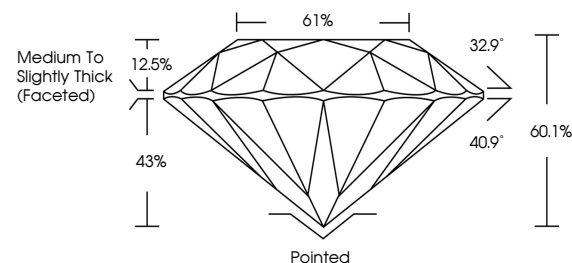
Clarity Grade **VVS 2**

Cut Grade **EXCELLENT**

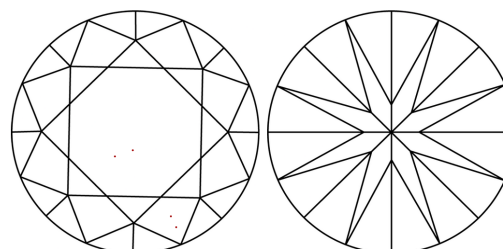


Sample Image Used

**PROPORTIONS**



**CLARITY CHARACTERISTICS**



**KEY TO SYMBOLS**

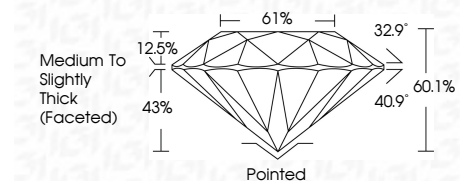
Red symbols indicate internal characteristics.  
Green symbols indicate external characteristics.

**COLOR**

D E F G H I J Faint Very Light Light

**CLARITY**

FL	IF	VVS <sup>1-2</sup>	VS <sup>1-2</sup>	SI <sup>1-2</sup>	I <sup>1-3</sup>
Flawless	Internally Flawless	Very Very Slightly Included	Very Slightly Included	Slightly Included	Included



**ADDITIONAL GRADING INFORMATION**

Polish **EXCELLENT**

Symmetry **EXCELLENT**

Fluorescence **NONE**

Inscription(s) **IGI LG799618524**

Comments: This Laboratory Grown Diamond was created by Chemical Vapor Deposition (CVD) growth process. Type IIa



May 12, 2026  
IGI Report No LG799618524  
**ROUND BRILLIANT**

**3.01 CARATS**  
E  
**EXCELLENT**  
60.1%  
61%  
Medium To Slightly Thick (Faceted)

**Pointed**  
**EXCELLENT**  
**EXCELLENT**  
**NONE**  
**IGI LG799618524**

Cut: **Pointed**  
Polish: **EXCELLENT**  
Symmetry: **EXCELLENT**  
Fluorescence: **NONE**  
Inscriptions(s): **IGI LG799618524**

Comments: This Laboratory Grown Diamond was created by Chemical Vapor Deposition (CVD) growth process. Type IIa