



**ELECTRONIC COPY**

LG799624774  
Report verification at igi.org



May 18, 2026

IGI Report Number **LG799624774**

Description **LABORATORY GROWN DIAMOND**

Shape and Cutting Style **CUT CORNERED  
RECTANGULAR MODIFIED  
BRILLIANT**

Measurements **6.80 X 4.83 X 3.19 MM**

**GRADING RESULTS**

Carat Weight **1.01 CARAT**

Color Grade **FANCY INTENSE YELLOW**

Clarity Grade **SI 1**

**LABORATORY GROWN DIAMOND REPORT**

May 18, 2026

IGI Report Number **LG799624774**

Description **LABORATORY GROWN DIAMOND**

Shape and Cutting Style **CUT CORNERED RECTANGULAR  
MODIFIED BRILLIANT**

Measurements **6.80 X 4.83 X 3.19 MM**

**GRADING RESULTS**

Carat Weight **1.01 CARAT**

Color Grade **FANCY INTENSE YELLOW**

Clarity Grade **SI 1**

**ADDITIONAL GRADING INFORMATION**

Polish **EXCELLENT**

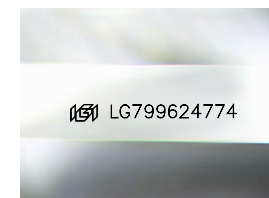
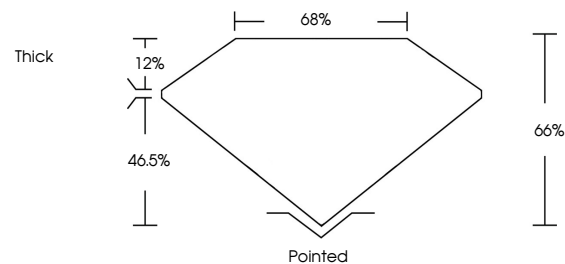
Symmetry **EXCELLENT**

Fluorescence **NONE**

Inscription(s) **IGI LG799624774**

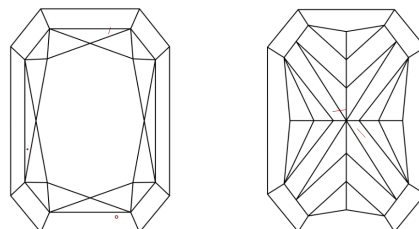
Comments: This Laboratory Grown Diamond was created by Chemical Vapor Deposition (CVD) growth process.

**PROPORTIONS**



Sample Image Used

**CLARITY CHARACTERISTICS**



**KEY TO SYMBOLS**

Red symbols indicate internal characteristics.  
Green symbols indicate external characteristics.

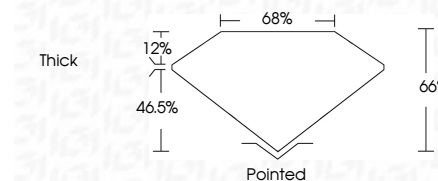
**COLOR**

D E F G H I J Faint Very Light Light

**CLARITY**

FL IF VS<sup>1-2</sup> VS<sup>1-2</sup> SI<sup>1-2</sup> I<sup>1-3</sup>

Flawless Internally Flawless Very Very Slightly Included Very Slightly Included Slightly Included Included



**ADDITIONAL GRADING INFORMATION**

Polish **EXCELLENT**

Symmetry **EXCELLENT**

Fluorescence **NONE**

Inscription(s) **IGI LG799624774**

Comments: This Laboratory Grown Diamond was created by Chemical Vapor Deposition (CVD) growth process.



**IGI**



May 18, 2026	IGI Report No LG799624774	CUT CORNERED RECT. MODIFIED BRILLIANT	6.80 X 4.83 X 3.19 MM	1.01 CARAT	FANCY INTENSE YELLOW	SI 1	66%	68%	Thick	Pointed	EXCELLENT	EXCELLENT	NONE	IGI LG799624774
				Carat Weight	Color Grade	Clarity Grade	Depth	Table	Girdle	Culet	Polish	Symmetry	Fluorescence	Inscription(s)

Comments: This Laboratory Grown Diamond was created by Chemical Vapor Deposition (CVD) growth process.