



ELECTRONIC COPY

LG799624885
Report verification at igi.org



May 19, 2026
IGI Report Number **LG799624885**
Description **LABORATORY GROWN DIAMOND**
Shape and Cutting Style **CUT CORNERED
RECTANGULAR MIXED CUT**
Measurements **8.58 X 5.75 X 3.88 MM**
GRADING RESULTS
Carat Weight **1.86 CARAT**
Color Grade **FANCY VIVID YELLOW**
Clarity Grade **VS 2**

LABORATORY GROWN DIAMOND REPORT

May 19, 2026
IGI Report Number **LG799624885**
Description **LABORATORY GROWN DIAMOND**
Shape and Cutting Style **CUT CORNERED RECTANGULAR
MIXED CUT**
Measurements **8.58 X 5.75 X 3.88 MM**

GRADING RESULTS

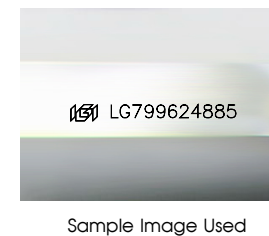
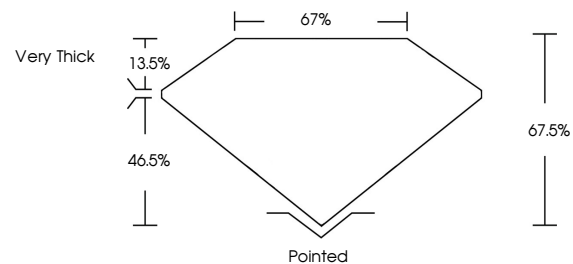
Carat Weight **1.86 CARAT**
Color Grade **FANCY VIVID YELLOW**
Clarity Grade **VS 2**

ADDITIONAL GRADING INFORMATION

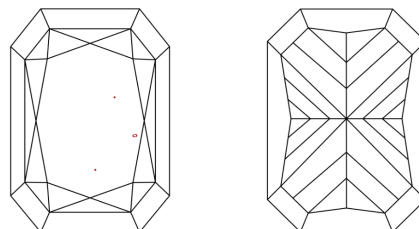
Polish **EXCELLENT**
Symmetry **EXCELLENT**
Fluorescence **NONE**
Inscription(s) **IGI LG799624885**

Comments: This Laboratory Grown Diamond was created by Chemical Vapor Deposition (CVD) growth process.

PROPORTIONS



CLARITY CHARACTERISTICS



KEY TO SYMBOLS

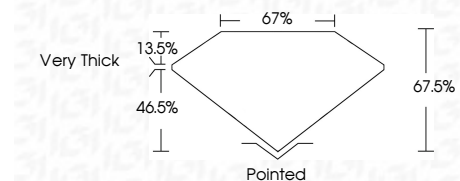
Red symbols indicate internal characteristics.
Green symbols indicate external characteristics.

COLOR

D E F G H I J Faint Very Light Light

CLARITY

FL	IF	VS ¹⁻²	VS ¹⁻²	SI ¹⁻²	I ¹⁻³
Flawless	Internally Flawless	Very Very Slightly Included	Very Slightly Included	Slightly Included	Included



ADDITIONAL GRADING INFORMATION

Polish **EXCELLENT**
Symmetry **EXCELLENT**
Fluorescence **NONE**
Inscription(s) **IGI LG799624885**
Comments: This Laboratory Grown Diamond was created by Chemical Vapor Deposition (CVD) growth process.



May 19, 2026
IGI Report No. LG799624885
CUT CORNERED RECT. MIXED CUT
1.86 CARAT
8.58 X 5.75 X 3.88 MM
FANCY VIVID YELLOW
VS 2
67.5%
67%
Very Thick
Pointed
EXCELLENT
EXCELLENT
NONE
IGI LG799624885
Comments: This Laboratory Grown Diamond was created by Chemical Vapor Deposition (CVD) growth process.