



ELECTRONIC COPY

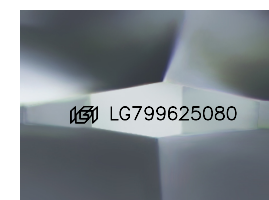
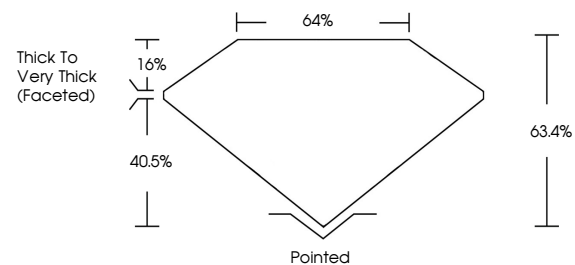
LG799625080
Report verification at igi.org



May 18, 2026
IGI Report Number **LG799625080**
Description **LABORATORY GROWN DIAMOND**
Shape and Cutting Style **SQUARE CUSHION MODIFIED BRILLIANT**
Measurements **6.16 X 6.10 X 3.87 MM**
GRADING RESULTS
Carat Weight **1.32 CARAT**
Color Grade **FANCY INTENSE YELLOW**
Clarity Grade **VS 1**

May 18, 2026
IGI Report Number **LG799625080**
Description **LABORATORY GROWN DIAMOND**
Shape and Cutting Style **SQUARE CUSHION MODIFIED BRILLIANT**
Measurements **6.16 X 6.10 X 3.87 MM**

PROPORTIONS

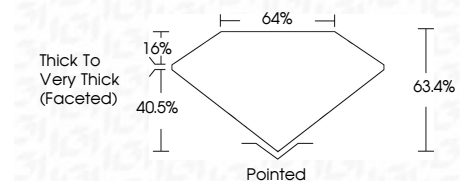
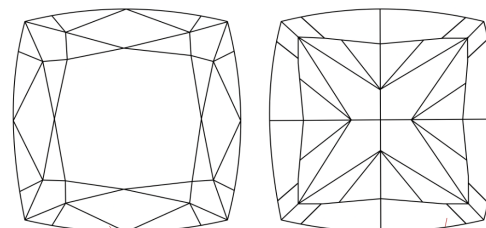


Sample Image Used

GRADING RESULTS

Carat Weight **1.32 CARAT**
Color Grade **FANCY INTENSE YELLOW**
Clarity Grade **VS 1**

CLARITY CHARACTERISTICS



ADDITIONAL GRADING INFORMATION

Polish **EXCELLENT**
Symmetry **EXCELLENT**
Fluorescence **NONE**
Inscription(s) **IGI LG799625080**

COLOR

D E F G H I J Faint Very Light Light

CLARITY

FL	IF	VS ¹⁻²	VS ¹⁻²	SI ¹⁻²	I ¹⁻³
Flawless	Internally Flawless	Very Very Slightly Included	Very Slightly Included	Slightly Included	Included

ADDITIONAL GRADING INFORMATION

Polish **EXCELLENT**
Symmetry **EXCELLENT**
Fluorescence **NONE**
Inscription(s) **IGI LG799625080**
Comments: This Laboratory Grown Diamond was created by Chemical Vapor Deposition (CVD) growth process.

KEY TO SYMBOLS

Red symbols indicate internal characteristics.
Green symbols indicate external characteristics.



IGI



May 18, 2026
IGI Report No **LG799625080**
SQUARE CUSHION MODIFIED BRILLIANT
6.16 X 6.10 X 3.87 MM
Carat Weight **1.32 CARAT**
Color Grade **FANCY INTENSE YELLOW**
Clarity Grade **VS 1**
Depth **40.5%**
Table **64%**
Girdle **Thick to Very Thick (Faceted)**
Culet **Pointed**
Polish **EXCELLENT**
Symmetry **EXCELLENT**
Fluorescence **NONE**
Inscription(s) **IGI LG799625080**
Comments: This Laboratory Grown Diamond was created by Chemical Vapor Deposition (CVD) growth process.