



ELECTRONIC COPY

LG799625120
Report verification at igi.org



May 18, 2026
IGI Report Number **LG799625120**
Description **LABORATORY GROWN DIAMOND**
Shape and Cutting Style **CUT CORNERED
RECTANGULAR MIXED CUT**
Measurements **8.37 X 6.02 X 4.15 MM**
GRADING RESULTS
Carat Weight **1.97 CARAT**
Color Grade **FANCY VIVID YELLOW**
Clarity Grade **SI 1**

LABORATORY GROWN DIAMOND REPORT

May 18, 2026
IGI Report Number **LG799625120**
Description **LABORATORY GROWN DIAMOND**
Shape and Cutting Style **CUT CORNERED RECTANGULAR
MIXED CUT**
Measurements **8.37 X 6.02 X 4.15 MM**

GRADING RESULTS

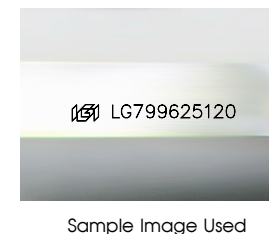
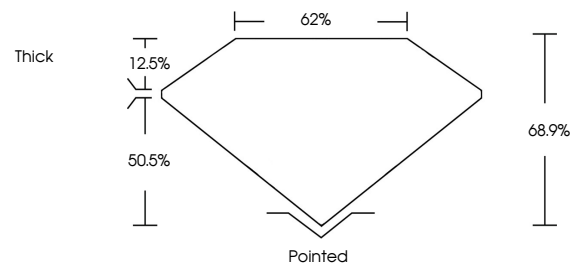
Carat Weight **1.97 CARAT**
Color Grade **FANCY VIVID YELLOW**
Clarity Grade **SI 1**

ADDITIONAL GRADING INFORMATION

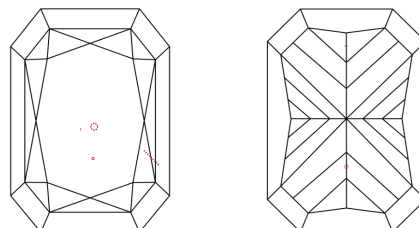
Polish **EXCELLENT**
Symmetry **EXCELLENT**
Fluorescence **NONE**
Inscription(s) **IGI LG799625120**

Comments: This Laboratory Grown Diamond was created by Chemical Vapor Deposition (CVD) growth process.

PROPORTIONS



CLARITY CHARACTERISTICS



KEY TO SYMBOLS

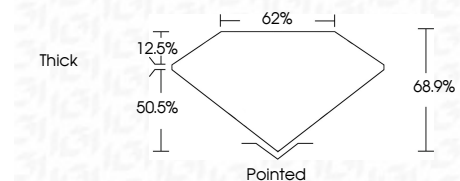
Red symbols indicate internal characteristics.
Green symbols indicate external characteristics.

COLOR

D E F G H I J Faint Very Light Light

CLARITY

| FL | IF | VS ¹⁻² | VS ¹⁻² | SI ¹⁻² | I ¹⁻³ |
|----------|---------------------|-----------------------------|------------------------|-------------------|------------------|
| Flawless | Internally Flawless | Very Very Slightly Included | Very Slightly Included | Slightly Included | Included |



ADDITIONAL GRADING INFORMATION

Polish **EXCELLENT**
Symmetry **EXCELLENT**
Fluorescence **NONE**
Inscription(s) **IGI LG799625120**
Comments: This Laboratory Grown Diamond was created by Chemical Vapor Deposition (CVD) growth process.



IGI



May 18, 2026
IGI Report No LG799625120
CUT CORNERED RECT. MIXED CUT
1.97 CARAT
FANCY VIVID YELLOW
SI 1
8.37 X 6.02 X 4.15 MM
68.9%
62%
Thick
Pointed
EXCELLENT
EXCELLENT
NONE
IGI LG799625120
Comments: This Laboratory Grown Diamond was created by Chemical Vapor Deposition (CVD) growth process.