



ELECTRONIC COPY

LG799625355
Report verification at igi.org



May 21, 2026
IGI Report Number **LG799625355**
Description **LABORATORY GROWN DIAMOND**
Shape and Cutting Style **PEAR MIXED CUT**
Measurements **15.69 X 5.53 X 2.94 MM**
GRADING RESULTS
Carat Weight **1.72 CARAT**
Color Grade **FANCY DEEP BROWN**
Clarity Grade **VS 2**

LABORATORY GROWN DIAMOND REPORT

May 21, 2026
IGI Report Number **LG799625355**
Description **LABORATORY GROWN DIAMOND**
Shape and Cutting Style **PEAR MIXED CUT**
Measurements **15.69 X 5.53 X 2.94 MM**

GRADING RESULTS

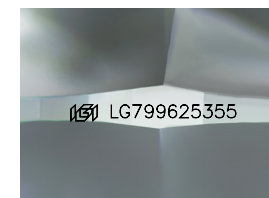
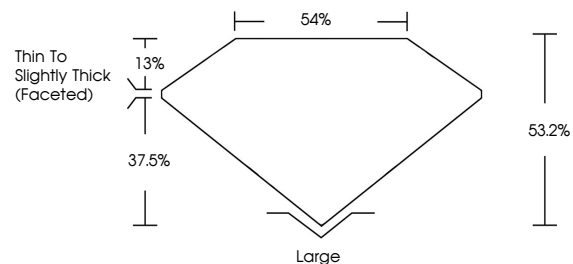
Carat Weight **1.72 CARAT**
Color Grade **FANCY DEEP BROWN**
Clarity Grade **VS 2**

ADDITIONAL GRADING INFORMATION

Polish **EXCELLENT**
Symmetry **VERY GOOD**
Fluorescence **NONE**
Inscription(s) **(15) LG799625355**

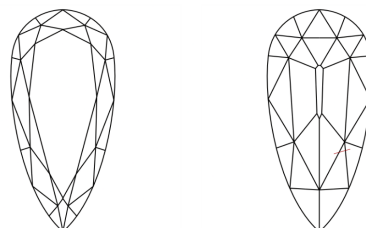
Comments: This Laboratory Grown Diamond was created by Chemical Vapor Deposition (CVD) growth process.
Indications of post-growth treatment.

PROPORTIONS



Sample Image Used

CLARITY CHARACTERISTICS



KEY TO SYMBOLS

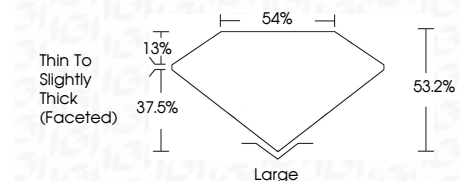
Red symbols indicate internal characteristics.
Green symbols indicate external characteristics.

COLOR

D E F G H I J Faint Very Light Light

CLARITY

FL	IF	VS ¹⁻²	VS ¹⁻²	SI ¹⁻²	I ¹⁻³
Flawless	Internally Flawless	Very Very Slightly Included	Very Slightly Included	Slightly Included	Included



ADDITIONAL GRADING INFORMATION

Polish **EXCELLENT**
Symmetry **VERY GOOD**
Fluorescence **NONE**
Inscription(s) **(15) LG799625355**
Comments: This Laboratory Grown Diamond was created by Chemical Vapor Deposition (CVD) growth process.
Indications of post-growth treatment.



May 21, 2026
IGI Report No. **LG799625355**
PEAR MIXED CUT
15.69 X 5.53 X 2.94 MM
1.72 CARAT
FANCY DEEP BROWN
VS 2
68.2%
54%
Thin to Slightly Thick (Faceted)
Large
EXCELLENT
VERY GOOD
NONE
(15) LG799625355
Comments: This Laboratory Grown Diamond was created by Chemical Vapor Deposition (CVD) growth process.
Indications of post-growth treatment.