



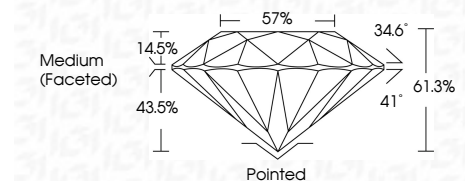
ELECTRONIC COPY

LG799631130
Report verification at igi.org



June 9, 2026
IGI Report Number **LG799631130**
Description **LABORATORY GROWN DIAMOND**
Shape and Cutting Style **ROUND BRILLIANT**
Measurements **8.14 - 8.21 X 5.01 MM**

GRADING RESULTS
Carat Weight **2.03 CARATS**
Color Grade **D**
Clarity Grade **VVS 2**
Cut Grade **IDEAL**



ADDITIONAL GRADING INFORMATION
Polish **EXCELLENT**
Symmetry **EXCELLENT**
Fluorescence **NONE**
Inscription(s) **IGI LG799631130**
Comments: This Laboratory Grown Diamond was created by Chemical Vapor Deposition (CVD) growth process. Type IIa



June 9, 2026
IGI Report No LG799631130
ROUND BRILLIANT
8.14 - 8.21 X 5.01 MM
2.03 CARATS
D
VVS 2
IDEAL
61.3%
57%
Medium (Faceted)
Pointed
EXCELLENT
EXCELLENT
NONE
IGI LG799631130
Comments: This Laboratory Grown Diamond was created by Chemical Vapor Deposition (CVD) growth process. Type IIa

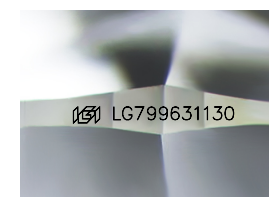
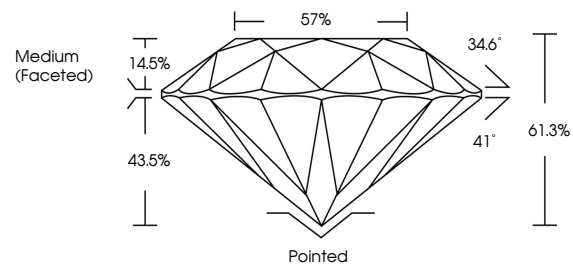
June 9, 2026
IGI Report Number **LG799631130**
Description **LABORATORY GROWN DIAMOND**
Shape and Cutting Style **ROUND BRILLIANT**
Measurements **8.14 - 8.21 X 5.01 MM**

GRADING RESULTS
Carat Weight **2.03 CARATS**
Color Grade **D**
Clarity Grade **VVS 2**
Cut Grade **IDEAL**

ADDITIONAL GRADING INFORMATION
Polish **EXCELLENT**
Symmetry **EXCELLENT**
Fluorescence **NONE**
Inscription(s) **IGI LG799631130**

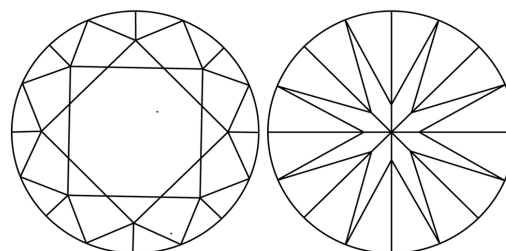
Comments: This Laboratory Grown Diamond was created by Chemical Vapor Deposition (CVD) growth process. Type IIa

PROPORTIONS



Sample Image Used

CLARITY CHARACTERISTICS



KEY TO SYMBOLS

Red symbols indicate internal characteristics.
Green symbols indicate external characteristics.

COLOR

D E F G H I J Faint Very Light Light

CLARITY

FL	IF	VVS ¹⁻²	VS ¹⁻²	SI ¹⁻²	I ¹⁻³
Flawless	Internally Flawless	Very Very Slightly Included	Very Slightly Included	Slightly Included	Included

