



ELECTRONIC COPY

LG799634903 Report verification at igi.org



June 4, 2026 IGI Report Number LG799634903 Description LABORATORY GROWN DIAMOND Shape and Cutting Style SQUARE CUSHION MODIFIED BRILLIANT Measurements 5.59 X 5.41 X 3.93 MM GRADING RESULTS Carat Weight 1.04 CARAT Color Grade FANCY INTENSE PINK Clarity Grade VVS 2

LABORATORY GROWN DIAMOND REPORT

June 4, 2026 IGI Report Number LG799634903 Description LABORATORY GROWN DIAMOND Shape and Cutting Style SQUARE CUSHION MODIFIED BRILLIANT Measurements 5.59 X 5.41 X 3.93 MM

GRADING RESULTS

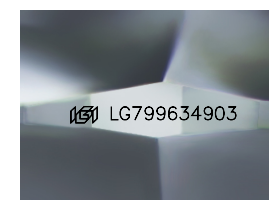
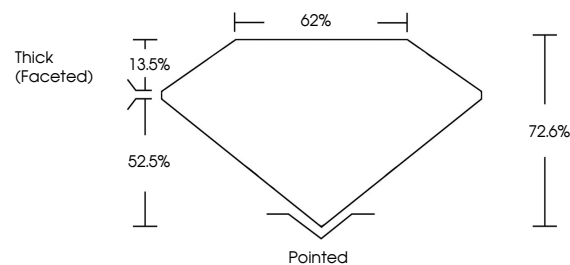
Carat Weight 1.04 CARAT Color Grade FANCY INTENSE PINK Clarity Grade VVS 2

ADDITIONAL GRADING INFORMATION

Polish EXCELLENT Symmetry EXCELLENT Fluorescence STRONG Inscription(s) IGI LG799634903

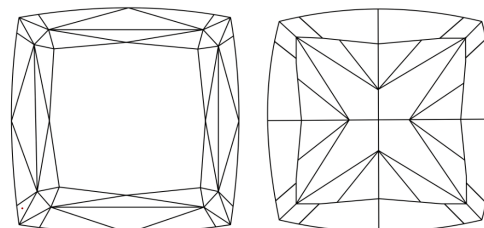
Comments: This Laboratory Grown Diamond was created by Chemical Vapor Deposition (CVD) growth process. Indications of post-growth treatment.

PROPORTIONS



Sample Image Used

CLARITY CHARACTERISTICS



KEY TO SYMBOLS

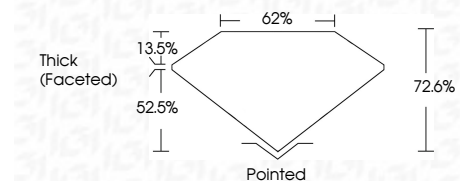
Red symbols indicate internal characteristics. Green symbols indicate external characteristics.

COLOR

D E F G H I J Faint Very Light Light

CLARITY

FL IF VVS 1-2 VS 1-2 SI 1-2 I 1-3 Flawless Internally Flawless Very Very Slightly Included Very Slightly Included Slightly Included Included



ADDITIONAL GRADING INFORMATION

Polish EXCELLENT Symmetry EXCELLENT Fluorescence STRONG Inscription(s) IGI LG799634903 Comments: This Laboratory Grown Diamond was created by Chemical Vapor Deposition (CVD) growth process. Indications of post-growth treatment.



June 4, 2026 IGI Report No. LG799634903 SQUARE CUSHION MODIFIED BRILLIANT 1.04 CARAT 1.04 CARAT FANCY INTENSE PINK VVS 2 72.6% 62% Thick (Faceted) Pointed EXCELLENT EXCELLENT STRONG STRONG IGI LG799634903 Comments: This Laboratory Grown Diamond was created by Chemical Vapor Deposition (CVD) growth process. Indications of post-growth treatment.