



ELECTRONIC COPY

LG799649522
Report verification at igi.org



May 19, 2026
IGI Report Number **LG799649522**
Description **LABORATORY GROWN DIAMOND**
Shape and Cutting Style **PRINCESS CUT**
Measurements **6.32 X 6.25 X 4.41 MM**
GRADING RESULTS
Carat Weight **1.54 CARAT**
Color Grade **FANCY INTENSE GREEN**
Clarity Grade **VVS 2**

May 19, 2026
IGI Report Number **LG799649522**
Description **LABORATORY GROWN DIAMOND**
Shape and Cutting Style **PRINCESS CUT**
Measurements **6.32 X 6.25 X 4.41 MM**

GRADING RESULTS

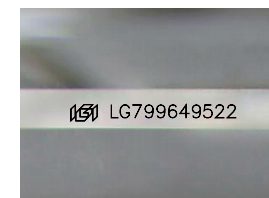
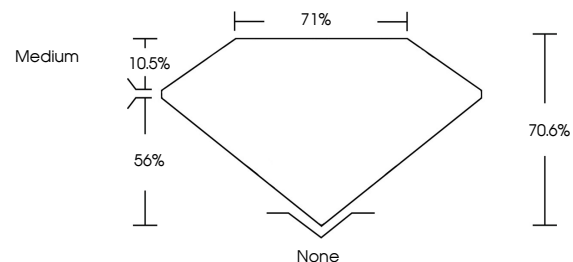
Carat Weight **1.54 CARAT**
Color Grade **FANCY INTENSE GREEN**
Clarity Grade **VVS 2**

ADDITIONAL GRADING INFORMATION

Polish **EXCELLENT**
Symmetry **EXCELLENT**
Fluorescence **NONE**
Inscription(s) **IGI LG799649522**

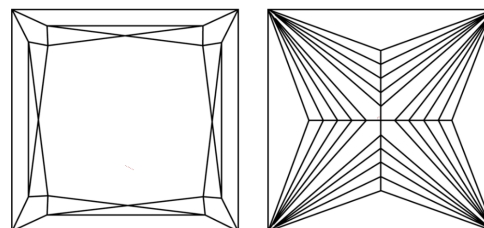
Comments: This Laboratory Grown Diamond was created by Chemical Vapor Deposition (CVD) growth process.
Indications of post-growth treatment.

PROPORTIONS



Sample Image Used

CLARITY CHARACTERISTICS



KEY TO SYMBOLS

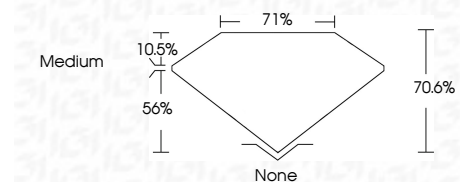
Red symbols indicate internal characteristics.
Green symbols indicate external characteristics.

COLOR

D E F G H I J Faint Very Light Light

CLARITY

FL	IF	VVS ¹⁻²	VS ¹⁻²	SI ¹⁻²	I ¹⁻³
Flawless	Internally Flawless	Very Very Slightly Included	Very Slightly Included	Slightly Included	Included



ADDITIONAL GRADING INFORMATION

Polish **EXCELLENT**
Symmetry **EXCELLENT**
Fluorescence **NONE**
Inscription(s) **IGI LG799649522**
Comments: This Laboratory Grown Diamond was created by Chemical Vapor Deposition (CVD) growth process.
Indications of post-growth treatment.



May 19, 2026
IGI Report No LG799649522
PRINCESS CUT
1.54 CARAT
6.32 X 6.25 X 4.41 MM
FANCY INTENSE GREEN
VVS 2
70.6%
71%
Medium
None
EXCELLENT
EXCELLENT
NONE
IGI LG799649522
Comments: This Laboratory Grown Diamond was created by Chemical Vapor Deposition (CVD) growth process.
Indications of post-growth treatment.