



ELECTRONIC COPY

LG799649553
Report verification at igi.org



May 20, 2026
IGI Report Number LG799649553
Description LABORATORY GROWN DIAMOND
Shape and Cutting Style CUT CORNERED RECTANGULAR MODIFIED BRILLIANT
Measurements 8.04 X 5.35 X 3.61 MM
GRADING RESULTS
Carat Weight 1.36 CARAT
Color Grade E
Clarity Grade VS 1

LABORATORY GROWN DIAMOND REPORT

May 20, 2026
IGI Report Number LG799649553
Description LABORATORY GROWN DIAMOND
Shape and Cutting Style CUT CORNERED RECTANGULAR MODIFIED BRILLIANT
Measurements 8.04 X 5.35 X 3.61 MM

GRADING RESULTS

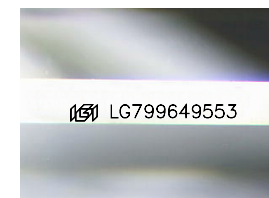
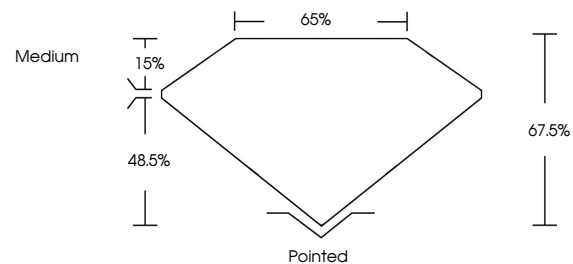
Carat Weight 1.36 CARAT
Color Grade E
Clarity Grade VS 1

ADDITIONAL GRADING INFORMATION

Polish EXCELLENT
Symmetry EXCELLENT
Fluorescence NONE
Inscription(s) LG799649553

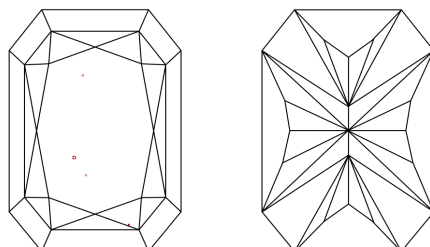
Comments: This Laboratory Grown Diamond was created by Chemical Vapor Deposition (CVD) growth process. Type IIa

PROPORTIONS



Sample Image Used

CLARITY CHARACTERISTICS



KEY TO SYMBOLS

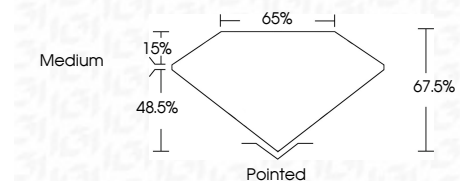
Red symbols indicate internal characteristics.
Green symbols indicate external characteristics.

COLOR

D E F G H I J Faint Very Light Light

CLARITY

FL IF VS 1-2 VS 2-3 SI 1-2 I 1-3
Flawless Internally Flawless Very Very Slightly Included Very Slightly Included Slightly Included Included



ADDITIONAL GRADING INFORMATION

Polish EXCELLENT
Symmetry EXCELLENT
Fluorescence NONE
Inscription(s) LG799649553
Comments: This Laboratory Grown Diamond was created by Chemical Vapor Deposition (CVD) growth process. Type IIa



May 20, 2026
IGI Report No LG799649553
CUT CORNERED RECT. MODIFIED BRILLIANT
8.04 X 5.35 X 3.61 MM
1.36 CARAT
E
VS 1
67.0%
65%
Medium
Pointed
EXCELLENT
EXCELLENT
NONE
Inscription(s) LG799649553
Comments: This Laboratory Grown Diamond was created by Chemical Vapor Deposition (CVD) growth process. Type IIa