



ELECTRONIC COPY

LG799649669
Report verification at igi.org



May 28, 2026
IGI Report Number **LG799649669**
Description **LABORATORY GROWN DIAMOND**
Shape and Cutting Style **ROUND BRILLIANT**
Measurements **6.83 - 6.87 X 3.97 MM**
GRADING RESULTS
Carat Weight **1.21 CARAT**
Color Grade **VERY LIGHT BROWN**
Clarity Grade **VS 1**
Cut Grade **EXCELLENT**

May 28, 2026
IGI Report Number **LG799649669**
Description **LABORATORY GROWN DIAMOND**
Shape and Cutting Style **ROUND BRILLIANT**
Measurements **6.83 - 6.87 X 3.97 MM**

GRADING RESULTS

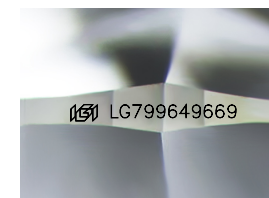
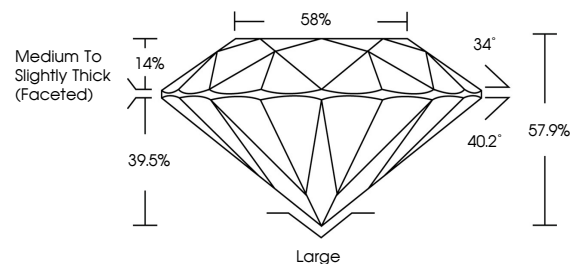
Carat Weight **1.21 CARAT**
Color Grade **VERY LIGHT BROWN**
Clarity Grade **VS 1**
Cut Grade **EXCELLENT**

ADDITIONAL GRADING INFORMATION

Polish **EXCELLENT**
Symmetry **EXCELLENT**
Fluorescence **VERY SLIGHT**
Inscription(s) **LG799649669**

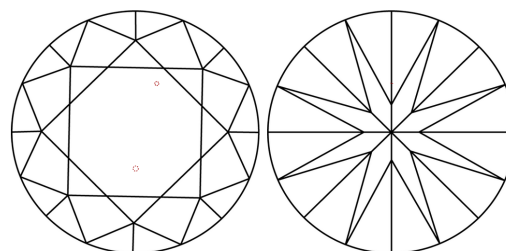
Comments: This Laboratory Grown Diamond was created by Chemical Vapor Deposition (CVD) growth process.
Type IIa

PROPORTIONS



Sample Image Used

CLARITY CHARACTERISTICS



KEY TO SYMBOLS

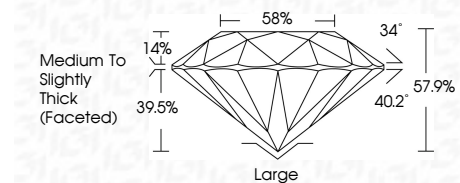
Red symbols indicate internal characteristics.
Green symbols indicate external characteristics.

COLOR

D E F G H I J Faint Very Light Light

CLARITY

FL	IF	VS ¹⁻²	VS ¹⁻²	SI ¹⁻²	I ¹⁻³
Flawless	Internally Flawless	Very Very Slightly Included	Very Slightly Included	Slightly Included	Included



ADDITIONAL GRADING INFORMATION

Polish **EXCELLENT**
Symmetry **EXCELLENT**
Fluorescence **VERY SLIGHT**
Inscription(s) **LG799649669**
Comments: This Laboratory Grown Diamond was created by Chemical Vapor Deposition (CVD) growth process.
Type IIa



May 28, 2026
IGI Report No. **LG799649669**
ROUND BRILLIANT
6.83 - 6.87 X 3.97 MM
1.21 CARAT
VERY LIGHT BROWN
Color Grade
VS 1
Clarity Grade
EXCELLENT
Cut Grade
57.9%
88%
Medium To Slightly Thick (Faceted)
Large
EXCELLENT
Polish
EXCELLENT
Symmetry
EXCELLENT
Fluorescence
VERY SLIGHT
Inscription(s)
 LG799649669
Comments: This Laboratory Grown Diamond was created by Chemical Vapor Deposition (CVD) growth process.
Type IIa