



ELECTRONIC COPY

LABORATORY GROWN DIAMOND REPORT

May 19, 2026
IGI Report Number **LG799649716**
Description **LABORATORY GROWN DIAMOND**
Shape and Cutting Style **OVAL MODIFIED BRILLIANT**
Measurements **10.41 X 6.86 X 4.49 MM**

GRADING RESULTS

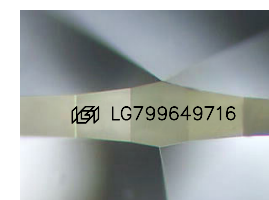
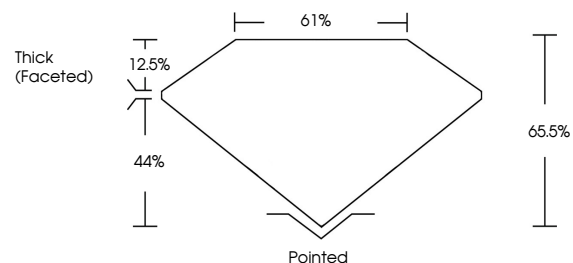
Carat Weight **2.56 CARATS**
Color Grade **FANCY DEEP BLUE**
Clarity Grade **VVS 2**

ADDITIONAL GRADING INFORMATION

Polish **EXCELLENT**
Symmetry **EXCELLENT**
Fluorescence **NONE**
Inscription(s) **IGI LG799649716**

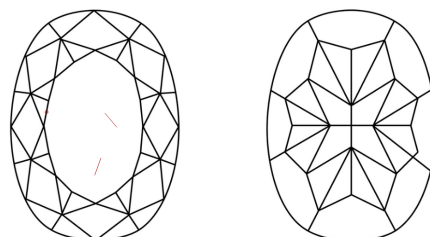
Comments: As Grown - No indication of post-growth treatment.
This Laboratory Grown Diamond was created by High Pressure High Temperature (HPHT) growth process.

PROPORTIONS



Sample Image Used

CLARITY CHARACTERISTICS



KEY TO SYMBOLS

Red symbols indicate internal characteristics.
Green symbols indicate external characteristics.

COLOR

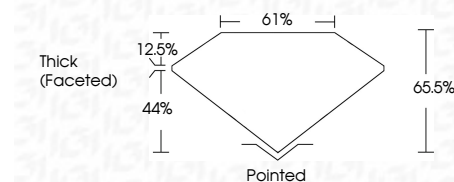
D E F G H I J Faint Very Light Light

CLARITY

FL IF VVS¹⁻² VS¹⁻² SI¹⁻² I¹⁻³
Flawless Internally Flawless Very Very Slightly Included Very Slightly Included Slightly Included Included



May 19, 2026
IGI Report Number **LG799649716**
Description **LABORATORY GROWN DIAMOND**
Shape and Cutting Style **OVAL MODIFIED BRILLIANT**
Measurements **10.41 X 6.86 X 4.49 MM**
GRADING RESULTS
Carat Weight **2.56 CARATS**
Color Grade **FANCY DEEP BLUE**
Clarity Grade **VVS 2**



ADDITIONAL GRADING INFORMATION

Polish **EXCELLENT**
Symmetry **EXCELLENT**
Fluorescence **NONE**
Inscription(s) **IGI LG799649716**
Comments: As Grown - No indication of post-growth treatment.
This Laboratory Grown Diamond was created by High Pressure High Temperature (HPHT) growth process.



May 19, 2026
IGI Report No **LG799649716**
OVAL MODIFIED BRILLIANT
2.56 CARATS
Carat Weight **FANCY DEEP BLUE**
Color Grade **VVS 2**
Clarity Grade **65.0%**
Depth **61%**
Table
Girdle
Thick (Faceted)
Culet
Polish **Pointed**
Symmetry **EXCELLENT**
Fluorescence **NONE**
Inscription(s) **IGI LG799649716**
Comments: As Grown - No indication of post-growth treatment.
This Laboratory Grown Diamond was created by High Pressure High Temperature (HPHT) growth process.