



**ELECTRONIC COPY**

LG799659784  
Report verification at igi.org



May 9, 2026

IGI Report Number **LG799659784**

Description **LABORATORY GROWN DIAMOND**

Shape and Cutting Style **ROUND BRILLIANT**

Measurements **6.68 - 6.72 X 4.01 MM**

**GRADING RESULTS**

Carat Weight **1.10 CARAT**

Color Grade **D**

Clarity Grade **VVS 2**

Cut Grade **IDEAL**

May 9, 2026

IGI Report Number **LG799659784**

Description **LABORATORY GROWN DIAMOND**

Shape and Cutting Style **ROUND BRILLIANT**

Measurements **6.68 - 6.72 X 4.01 MM**

**GRADING RESULTS**

Carat Weight **1.10 CARAT**

Color Grade **D**

Clarity Grade **VVS 2**

Cut Grade **IDEAL**

**ADDITIONAL GRADING INFORMATION**

Polish **EXCELLENT**

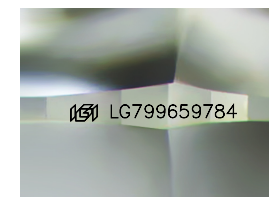
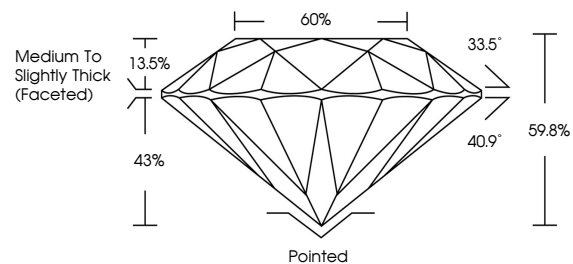
Symmetry **EXCELLENT**

Fluorescence **NONE**

Inscription(s) **IGI LG799659784**

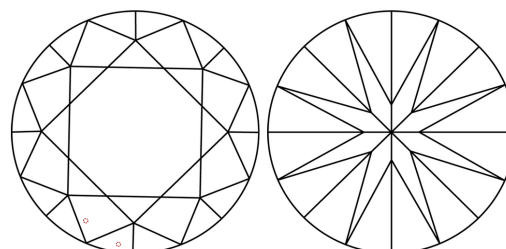
Comments: This Laboratory Grown Diamond was created by Chemical Vapor Deposition (CVD) growth process.  
Type IIa

**PROPORTIONS**



Sample Image Used

**CLARITY CHARACTERISTICS**



**KEY TO SYMBOLS**

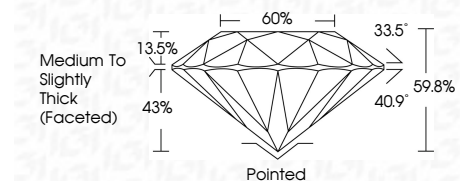
Red symbols indicate internal characteristics.  
Green symbols indicate external characteristics.

**COLOR**

D E F G H I J Faint Very Light Light

**CLARITY**

| FL       | IF                  | VVS <sup>1-2</sup>          | VS <sup>1-2</sup>      | SI <sup>1-2</sup> | I <sup>1-3</sup> |
|----------|---------------------|-----------------------------|------------------------|-------------------|------------------|
| Flawless | Internally Flawless | Very Very Slightly Included | Very Slightly Included | Slightly Included | Included         |



**ADDITIONAL GRADING INFORMATION**

Polish **EXCELLENT**

Symmetry **EXCELLENT**

Fluorescence **NONE**

Inscription(s) **IGI LG799659784**

Comments: This Laboratory Grown Diamond was created by Chemical Vapor Deposition (CVD) growth process.  
Type IIa



**IGI**



|                 |                           |               |       |         |           |                |      |                                    |
|-----------------|---------------------------|---------------|-------|---------|-----------|----------------|------|------------------------------------|
| May 9, 2026     | IGI Report No LG799659784 | 1.10 CARAT    | D     | Pointed | EXCELLENT | EXCELLENT      | NONE | IGI LG799659784                    |
| ROUND BRILLIANT | 6.68 - 6.72 X 4.01 MM     | Color Grade   | VVS 2 | Depth   | 59.8%     | Table          | 60%  | Medium To Slightly Thick (Faceted) |
|                 |                           | Clarity Grade | IDEAL | Girdle  |           | Culet          |      | Polish                             |
|                 |                           | Cut Grade     | IDEAL |         |           | Symmetry       |      | EXCELLENT                          |
|                 |                           |               |       |         |           | Fluorescence   |      | EXCELLENT                          |
|                 |                           |               |       |         |           | Inscription(s) |      | NONE                               |

Comments: This Laboratory Grown Diamond was created by Chemical Vapor Deposition (CVD) growth process.  
Type IIa