



May 14, 2026

IGI Report Number **LG799665366**

**ANTIQUÉ CUSHION CUT  
LABORATORY GROWN DIAMOND  
7.11 X 5.04 X 3.13 MM**

Carat Weight **0.89 CARAT**  
Color Grade **D**  
Clarity Grade **FLAWLESS**  
Polish **EXCELLENT**  
Symmetry **EXCELLENT**  
Fluorescence **NONE**  
Inscription(s) **IGI LG799665366**

Comments: As Grown - No indication of post-growth treatment. This Laboratory Grown Diamond was created by High Pressure High Temperature (HPHT) growth process. Type II

**LABORATORY GROWN DIAMOND REPORT**

May 14, 2026  
IGI Report Number **LG799665366**  
Description **LABORATORY GROWN DIAMOND**  
Shape and Cutting Style **ANTIQUÉ CUSHION CUT**  
Measurements **7.11 X 5.04 X 3.13 MM**

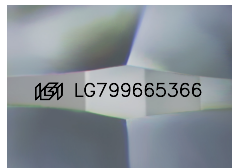
**GRADING RESULTS**

Carat Weight **0.89 CARAT**  
Color Grade **D**  
Clarity Grade **FLAWLESS**

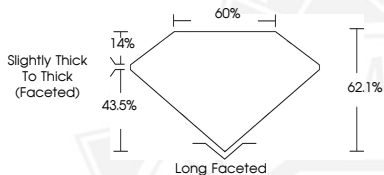
**ADDITIONAL GRADING INFORMATION**

Polish **EXCELLENT**  
Symmetry **EXCELLENT**  
Fluorescence **NONE**  
Inscription(s) **IGI LG799665366**

Comments: As Grown - No indication of post-growth treatment. This Laboratory Grown Diamond was created by High Pressure High Temperature (HPHT) growth process. Type II



Sample Image Used



May 14, 2026

IGI Report Number **LG799665366**

**ANTIQUÉ CUSHION CUT  
LABORATORY GROWN DIAMOND  
7.11 X 5.04 X 3.13 MM**

Carat Weight **0.89 CARAT**  
Color Grade **D**  
Clarity Grade **FLAWLESS**  
Polish **EXCELLENT**  
Symmetry **EXCELLENT**  
Fluorescence **NONE**  
Inscription(s) **IGI LG799665366**

Comments: As Grown - No indication of post-growth treatment. This Laboratory Grown Diamond was created by High Pressure High Temperature (HPHT) growth process. Type II



THIS DOCUMENT WAS PRODUCED WITH THE FOLLOWING SECURITY MEASURES: SPECIAL DOCUMENT PAPER, INK SCREENS, WATERMARK, BACKGROUND DESIGNS, HOLOGRAM AND OTHER SECURITY FEATURES NOT LISTED AND DO EXCEED DOCUMENT SECURITY INDUSTRY GUIDELINES.