



May 15, 2026

IGI Report Number **LG799666728**

**ROUND BRILLIANT  
LABORATORY GROWN DIAMOND  
5.44 - 5.46 X 3.40 MM**

Carat Weight **0.63 CARAT**  
Color Grade **FANCY INTENSE**

Clarity Grade **VVS 2**  
Cut Grade **IDEAL**

Polish **EXCELLENT**  
Symmetry **EXCELLENT**

Fluorescence **NONE**  
Inscription(s) **IGI LG799666728**

Comments: As Grown - No indication of post-growth treatment. This Laboratory Grown Diamond was created by High Pressure High Temperature (HPHT) growth process.

**LABORATORY GROWN DIAMOND REPORT**

May 15, 2026

IGI Report Number

**LG799666728**

Description

**LABORATORY GROWN DIAMOND**

Shape and Cutting Style

**ROUND BRILLIANT**

Measurements

**5.44 - 5.46 X 3.40 MM**

**GRADING RESULTS**

Carat Weight

**0.63 CARAT**

Color Grade

**FANCY INTENSE YELLOW**

Clarity Grade

**VVS 2**

Cut Grade

**IDEAL**

**ADDITIONAL GRADING INFORMATION**

Polish

**EXCELLENT**

Symmetry

**EXCELLENT**

Fluorescence

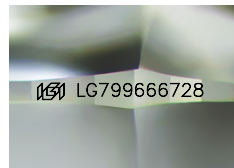
**NONE**

Inscription(s)

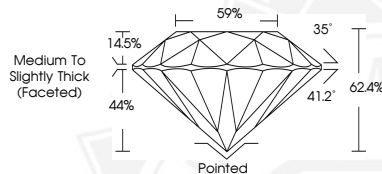
**IGI LG799666728**

Comments: As Grown - No indication of post-growth treatment.

This Laboratory Grown Diamond was created by High Pressure High Temperature (HPHT) growth process.



Sample Image Used



May 15, 2026

IGI Report Number **LG799666728**

**ROUND BRILLIANT  
LABORATORY GROWN DIAMOND  
5.44 - 5.46 X 3.40 MM**

Carat Weight **0.63 CARAT**  
Color Grade **FANCY INTENSE**

Clarity Grade **VVS 2**  
Cut Grade **IDEAL**

Polish **EXCELLENT**  
Symmetry **EXCELLENT**

Fluorescence **NONE**  
Inscription(s) **IGI LG799666728**

Comments: As Grown - No indication of post-growth treatment. This Laboratory Grown Diamond was created by High Pressure High Temperature (HPHT) growth process.



THIS DOCUMENT WAS PRODUCED WITH THE FOLLOWING SECURITY MEASURES: SPECIAL DOCUMENT PAPER, INK SCREENS, WATERMARK, BACKGROUND DESIGNS, HOLOGRAM AND OTHER SECURITY FEATURES NOT LISTED AND DO EXCEED DOCUMENT SECURITY INDUSTRY GUIDELINES.