



ELECTRONIC COPY

LG799672107
Report verification at igi.org



May 11, 2026

IGI Report Number **LG799672107**

Description **LABORATORY GROWN DIAMOND**

Shape and Cutting Style **HEXAGONAL STEP CUT**

Measurements **12.69 X 10.66 X 6.23 MM**

GRADING RESULTS

Carat Weight **6.42 CARATS**

Color Grade **FANCY INTENSE PINK**

Clarity Grade **VVS 2**

May 11, 2026
IGI Report Number **LG799672107**
Description **LABORATORY GROWN DIAMOND**
Shape and Cutting Style **HEXAGONAL STEP CUT**
Measurements **12.69 X 10.66 X 6.23 MM**

GRADING RESULTS

Carat Weight **6.42 CARATS**

Color Grade **FANCY INTENSE PINK**

Clarity Grade **VVS 2**

ADDITIONAL GRADING INFORMATION

Polish **EXCELLENT**

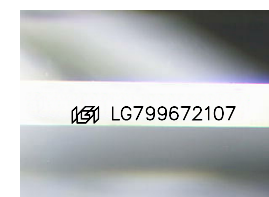
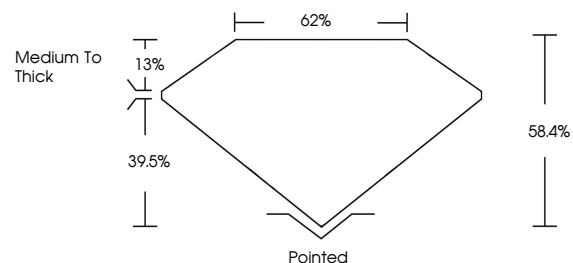
Symmetry **EXCELLENT**

Fluorescence **SLIGHT**

Inscription(s) **IGI LG799672107**

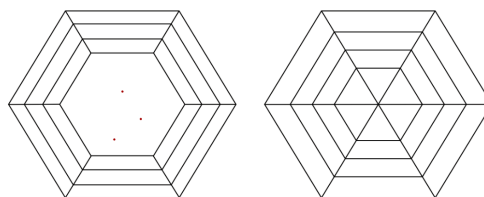
Comments: This Laboratory Grown Diamond was created by Chemical Vapor Deposition (CVD) growth process.
Indications of post-growth treatment.

PROPORTIONS



Sample Image Used

CLARITY CHARACTERISTICS



KEY TO SYMBOLS

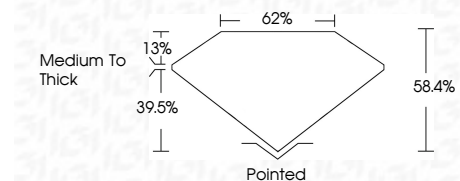
Red symbols indicate internal characteristics.
Green symbols indicate external characteristics.

COLOR

D E F G H I J Faint Very Light Light

CLARITY

FL	IF	VVS ¹⁻²	VS ¹⁻²	SI ¹⁻²	I ¹⁻³
Flawless	Internally Flawless	Very Very Slightly Included	Very Slightly Included	Slightly Included	Included



ADDITIONAL GRADING INFORMATION

Polish **EXCELLENT**

Symmetry **EXCELLENT**

Fluorescence **SLIGHT**

Inscription(s) **IGI LG799672107**

Comments: This Laboratory Grown Diamond was created by Chemical Vapor Deposition (CVD) growth process.
Indications of post-growth treatment.



IGI



May 11, 2026	IGI Report No LG799672107	HEXAGONAL STEP CUT	6.42 CARATS	FANCY INTENSE PINK	VVS 2	58.4%	62%	Medium to Thick	Pointed	EXCELLENT	EXCELLENT	SLIGHT	IGI LG799672107
12.69 X 10.66 X 6.23 MM	Carat Weight	Color Grade	Clarity Grade	Table	Depth	Girdle	Culet	Polish	Symmetry	Fluorescence	Inscription(s)		

Comments: This Laboratory Grown Diamond was created by Chemical Vapor Deposition (CVD) growth process.
Indications of post-growth treatment.