



ELECTRONIC COPY

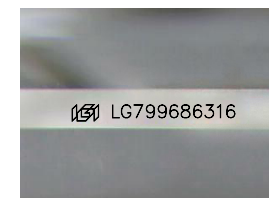
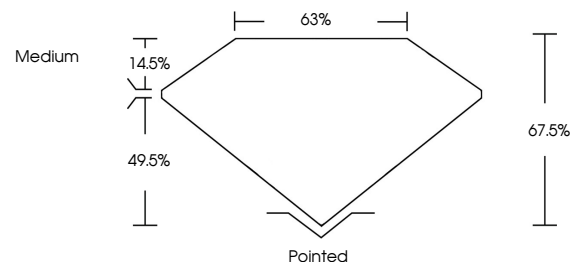
LG799686316 Report verification at igi.org



May 10, 2026 IGI Report Number LG799686316 Description LABORATORY GROWN DIAMOND Shape and Cutting Style CUT CORNERED RECTANGULAR MODIFIED BRILLIANT Measurements 9.02 X 6.22 X 4.20 MM GRADING RESULTS Carat Weight 2.05 CARATS Color Grade F Clarity Grade VVS 2

May 10, 2026 IGI Report Number LG799686316 Description LABORATORY GROWN DIAMOND Shape and Cutting Style CUT CORNERED RECTANGULAR MODIFIED BRILLIANT Measurements 9.02 X 6.22 X 4.20 MM

PROPORTIONS

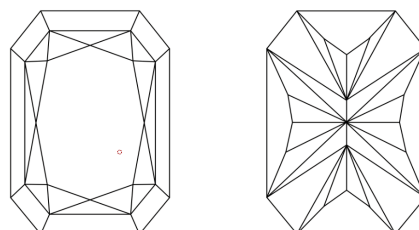


Sample Image Used

GRADING RESULTS

Carat Weight 2.05 CARATS Color Grade F Clarity Grade VVS 2

CLARITY CHARACTERISTICS



KEY TO SYMBOLS

Red symbols indicate internal characteristics. Green symbols indicate external characteristics.

ADDITIONAL GRADING INFORMATION

Polish EXCELLENT Symmetry EXCELLENT Fluorescence NONE Inscription(s) LG799686316

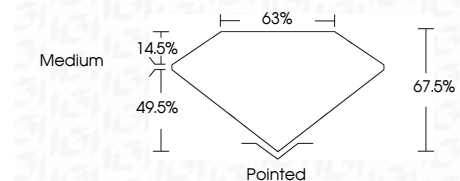
Comments: This Laboratory Grown Diamond was created by Chemical Vapor Deposition (CVD) growth process. Type IIa

COLOR

D E F G H I J Faint Very Light Light

CLARITY

FL IF VVS 1-2 VS 1-2 SI 1-2 I 1-3 Flawless Internally Flawless Very Very Slightly Included Very Slightly Included Slightly Included Included



ADDITIONAL GRADING INFORMATION

Polish EXCELLENT Symmetry EXCELLENT Fluorescence NONE Inscription(s) LG799686316 Comments: This Laboratory Grown Diamond was created by Chemical Vapor Deposition (CVD) growth process. Type IIa



May 10, 2026 IGI Report No LG799686316 CUT CORNERED RECT. MODIFIED BRILLIANT 9.02 X 6.22 X 4.20 MM 2.05 CARATS F VVS 2 67.0% 63% Medium Pointed EXCELLENT EXCELLENT NONE LG799686316 Comments: This Laboratory Grown Diamond was created by Chemical Vapor Deposition (CVD) growth process. Type IIa