



ELECTRONIC COPY

LG799692065
Report verification at igi.org



May 9, 2026

IGI Report Number **LG799692065**

Description **LABORATORY GROWN DIAMOND**

Shape and Cutting Style **CUT CORNERED
RECTANGULAR MODIFIED
BRILLIANT**

Measurements **13.67 X 9.62 X 6.41 MM**

GRADING RESULTS

Carat Weight **7.40 CARATS**

Color Grade **F**

Clarity Grade **VS 1**

May 9, 2026

IGI Report Number **LG799692065**

Description **LABORATORY GROWN DIAMOND**

Shape and Cutting Style **CUT CORNERED RECTANGULAR
MODIFIED BRILLIANT**

Measurements **13.67 X 9.62 X 6.41 MM**

GRADING RESULTS

Carat Weight **7.40 CARATS**

Color Grade **F**

Clarity Grade **VS 1**

ADDITIONAL GRADING INFORMATION

Polish **EXCELLENT**

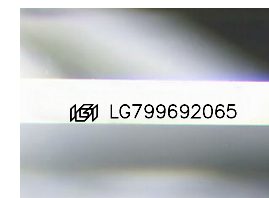
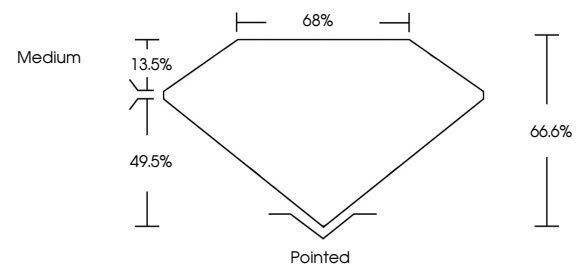
Symmetry **EXCELLENT**

Fluorescence **NONE**

Inscription(s) **IGI LG799692065**

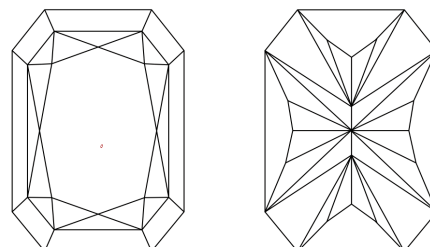
Comments: This Laboratory Grown Diamond was created by Chemical Vapor Deposition (CVD) growth process. Type IIa

PROPORTIONS



Sample Image Used

CLARITY CHARACTERISTICS



KEY TO SYMBOLS

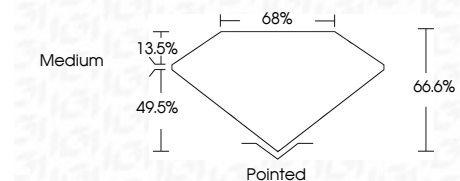
Red symbols indicate internal characteristics.
Green symbols indicate external characteristics.

COLOR

D E F G H I J Faint Very Light Light

CLARITY

| FL | IF | VS ¹⁻² | VS ¹⁻² | SI ¹⁻² | I ¹⁻³ |
|----------|---------------------|-----------------------------|------------------------|-------------------|------------------|
| Flawless | Internally Flawless | Very Very Slightly Included | Very Slightly Included | Slightly Included | Included |



ADDITIONAL GRADING INFORMATION

Polish **EXCELLENT**

Symmetry **EXCELLENT**

Fluorescence **NONE**

Inscription(s) **IGI LG799692065**

Comments: This Laboratory Grown Diamond was created by Chemical Vapor Deposition (CVD) growth process. Type IIa



IGI



May 9, 2026
IGI Report No LG799692065
CUT CORNERED RECT. MODIFIED BRILLIANT
13.67 X 9.62 X 6.41 MM
7.40 CARATS
F
Color Grade
VS 1
Clarity Grade
66.6%
Depth
49.5%
Table
Medium
Grades
Pointed
EXCELLENT
EXCELLENT
NONE
IGI LG799692065
Inscription(s)

Comments: This Laboratory Grown Diamond was created by Chemical Vapor Deposition (CVD) growth process. Type IIa